



Instructions on travelling and quarantine

Do not travel to risk areas abroad. If you are returning from a high-risk area, you will need to quarantine. A mandatory quarantine requirement applies to those coming from very high-risk areas. Check the list of countries and areas by using the Quarantine Check for Travellers on reizentijdenscorona.nl 24 hours before you travel.

Quarantine for travellers coming from high-risk areas

If you are returning from a high-risk area, for example because of a death in your immediate family, you will need to quarantine for 10 days upon arrival in the Netherlands.

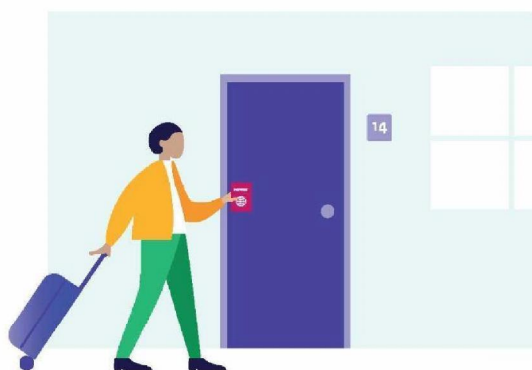
You can make a test appointment on day 5. Call 0800 1202 or make an appointment online on coronatest.nl.

If the test result is negative, you can end your quarantine.

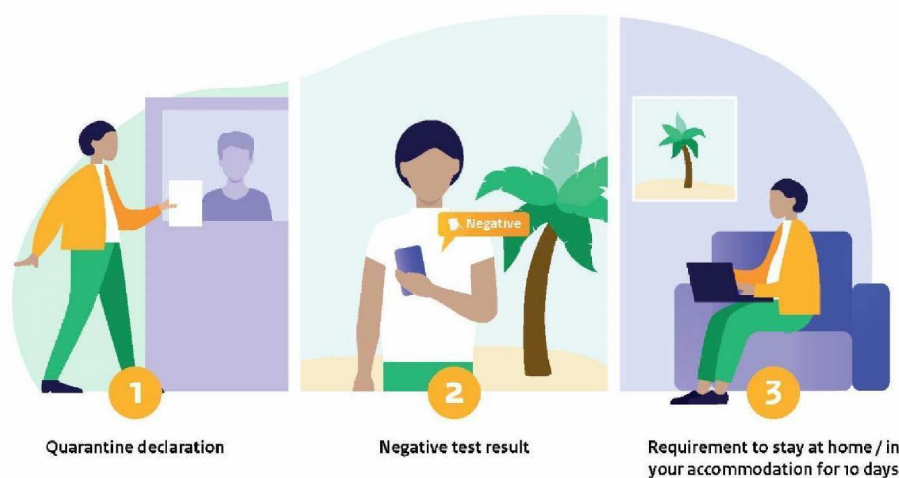
Mandatory quarantine for travellers coming from very high-risk areas (requirement to stay at home or in your accommodation)

If you are returning from a very high-risk area, you are required to quarantine at home or in your accommodation for 10 days. On day 5 you can make a test appointment to shorten the quarantine period.

Mandatory quarantine applies to people arriving using all forms of transport: aeroplane, train, ferry or car.



alleen samen krijgen we
corona onder controle



What you need to arrange before you leave for the Netherlands

If you are travelling to the Netherlands from a very high-risk country you must:

1. Carry a completed quarantine declaration with you (available at government.nl/mandatoryquarantine).
2. Carry a negative COVID-19 test result with you (more information at government.nl/mandatory-negative-test).
3. Make arrangements for a mandatory 10-day quarantine (stay at home/in your accommodation). If you test negative on day 5 or later, you can end your quarantine.

Quarantine declaration and mandatory quarantine checks

Teams of officials and public servants with investigative powers – for example, special enforcement officers (BOAs) – will check compliance with the mandatory quarantine requirement. This involves checking whether you are at the address you supplied in your quarantine declaration.

You must also be reachable at the telephone number you have supplied. You can be fined €339 for failure to comply with the mandatory quarantine requirement.

Find out more at
government.nl/mandatoryquarantine
 or call 0800-1351

alleen samen krijgen we
 corona onder controle