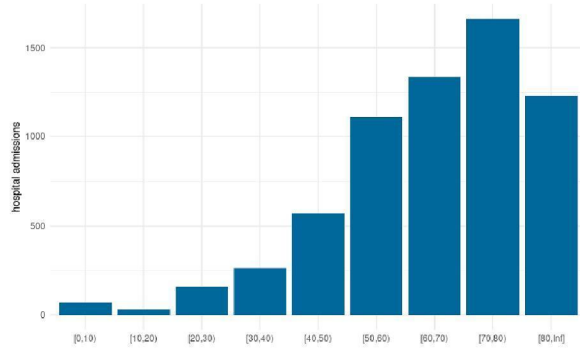


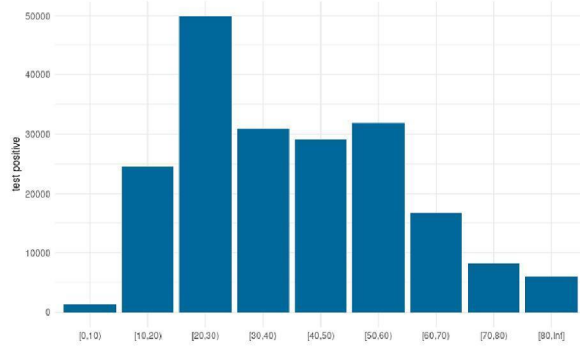
# Underreporting

- Data sources:
  - OSIRIS for reports test positives (data 30 Oct)
  - NICE for hospital admissions (data 29 Oct)
  - Pienter Corona for seroprevalence
- Estimated total number of hospital admissions and test positives who had symptom onset between 1 Jul and 15 Oct
- Age distribution of reported test positives and hospital admissions between 1 Jul and 15 Oct

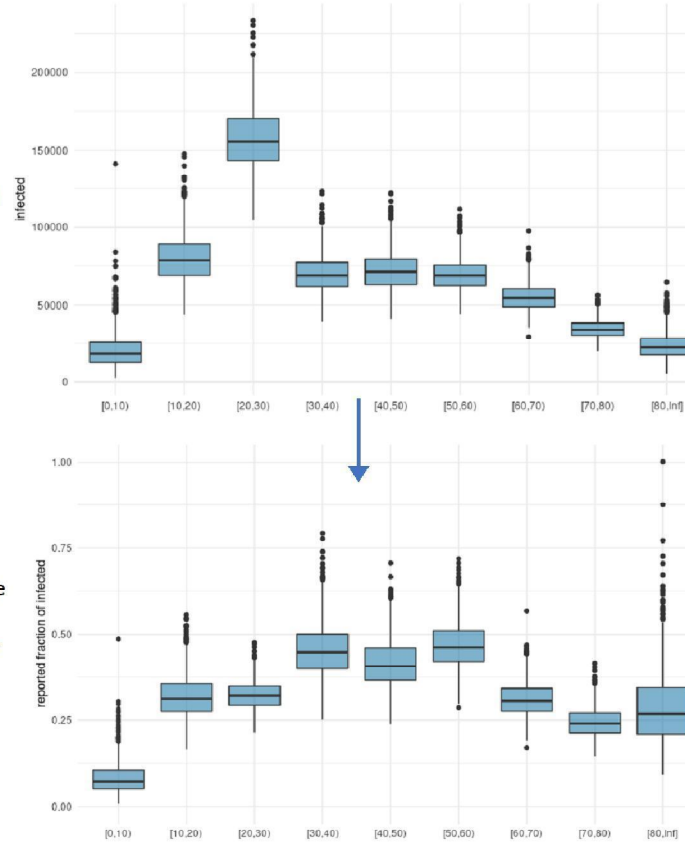
Total test positive cases and hospital admissions with symptom onset from July 1 to October 15



multiply with:  
infected per  
hospital  
admission (from  
serology)



divide by:  
infected per age  
group



Total test positive cases and hospital admissions with symptom onset from July 1 to October 15 (data 29 Oct)

age_group	mean	median	2.5%	97.5%
[0,10)	0.0832	0.0724	0.0264	0.201
[10,20)	0.319	0.312	0.214	0.469
[20,30)	0.323	0.321	0.246	0.413
[30,40)	0.454	0.449	0.318	0.626
[40,50)	0.415	0.408	0.290	0.562
[50,60)	0.469	0.463	0.351	0.622
[60,70)	0.310	0.306	0.226	0.415
[70,80)	0.244	0.240	0.174	0.336
[80,Inf]	0.286	0.268	0.137	0.535
All	0.341	0.341	0.302	0.387

Total test positive cases and hospital admissions with symptom onset from July 1 to October 15 (data 22 Oct):  
as comparison of same time window, but older data

age_group	mean	median	2.5%	97.5%
[0,10)	0.0877	0.0755	0.0279	0.212
[10,20)	0.300	0.294	0.202	0.425
[20,30)	0.324	0.321	0.244	0.413
[30,40)	0.462	0.456	0.317	0.635
[40,50)	0.411	0.408	0.281	0.565
[50,60)	0.472	0.467	0.347	0.620
[60,70)	0.317	0.315	0.228	0.425
[70,80)	0.255	0.253	0.175	0.355
[80,Inf]	0.297	0.274	0.142	0.564
All	0.341	0.341	0.301	0.385