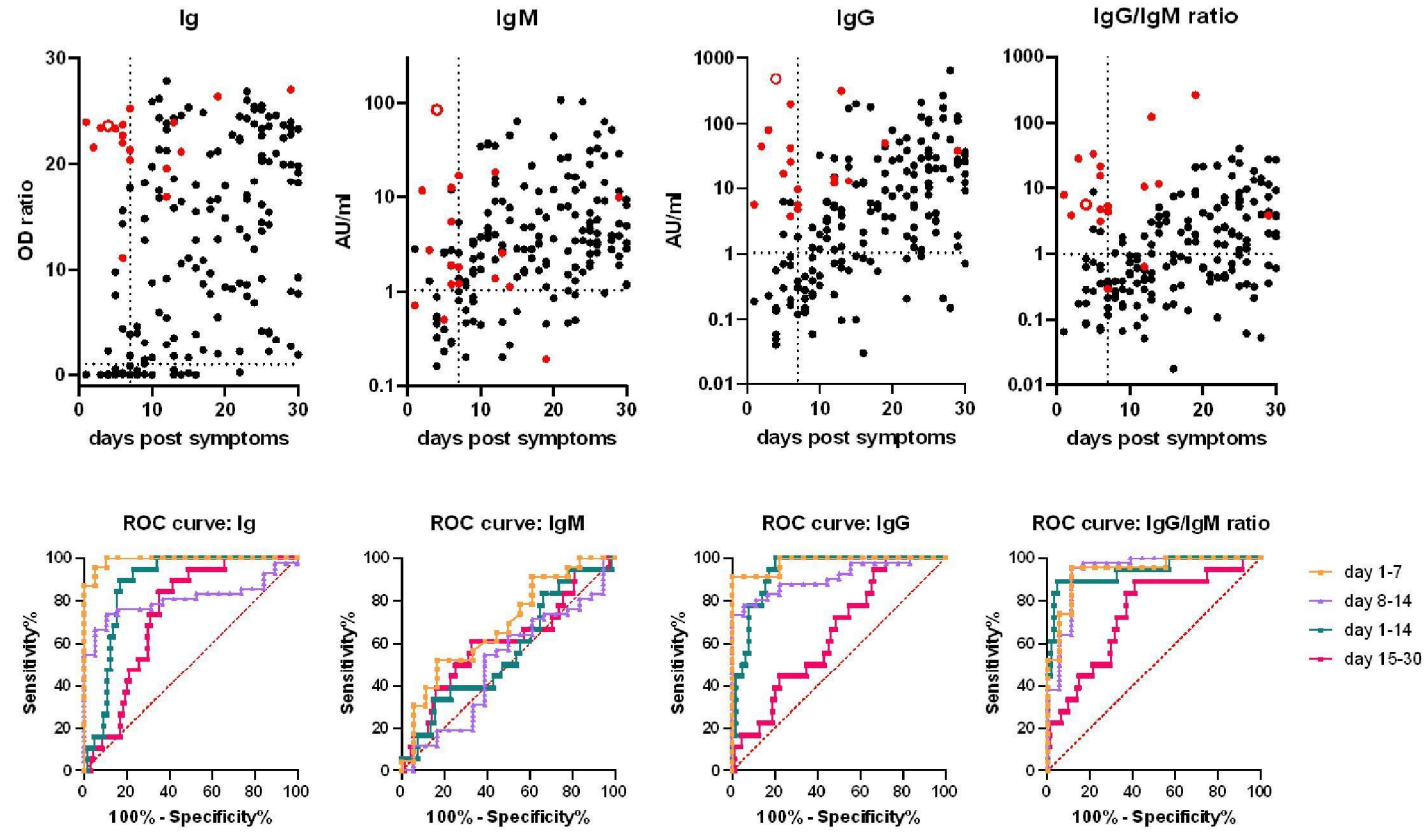


table 1a. Characteristics of re-infection cases

Volg # of ID	unilab#	gender	age	months between the 2 episodes	clinical symptoms / description /remarks	Ct 2nd	seq2type	serum (day)
1	4722001582	M	65	3,1		35	B.1.1.47	2
2	4752000005	F	54	2,1		34	pending	4
3	4752000006	M	18	2,1	1st episode not tested	35	pending	7
5	4752000008	M	47	2,8	1st episode not tested	36		6
8	4752000011	M	52	3,8	no pos. contacts 2nd episode	44		7
10	4752000014	F	22	2,5	2nd episode mild but more severe complaints	31	B.1.1	29
11	4752000015	M	59	2,6	recovered between episodes 1 negative test	pos		6
12	4752000016	F	57	2,5	not recoverd between episodes 1 negative test	pos		3
13	4752000018	F	64	2,8		pos		13
14	4752000019	F	31	3,9		34	pending	12
15	4752000020	M	85	4,1		35	B.1.22	14
16	4752000021	F	78	2,4		27	B.1.22	6
17	4752000022	F	22	2,1	1st episode Brasil positive serology	33	B.1.8	5
18	4752000023	F	50	1,9		33		12
19	4752000024	F	31	4,0		pos		6
20	4752000025	F	21	4,2		pos		1
28	4752000033	M	62	4,4		33		19
29	4752000034	M	31	4,4		42		7
median			51,0	2,8				6,5
range			18-85	1,9-4,4				2-29

figure 2



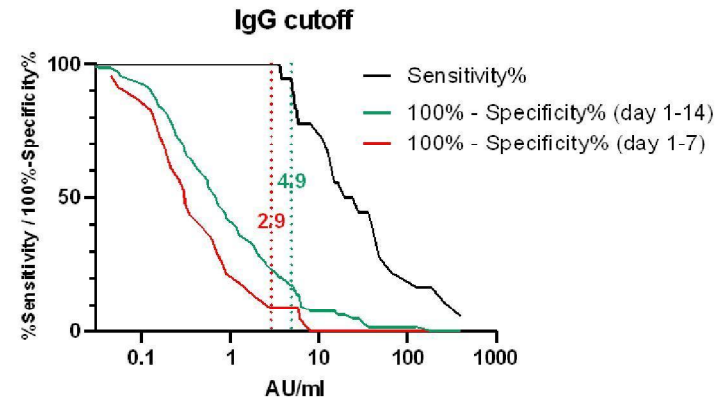
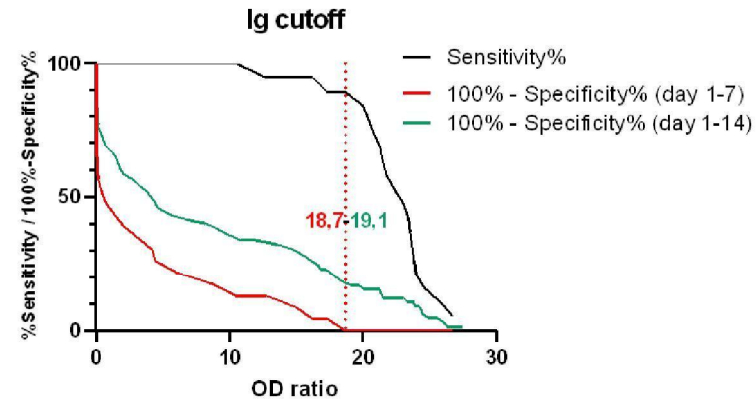
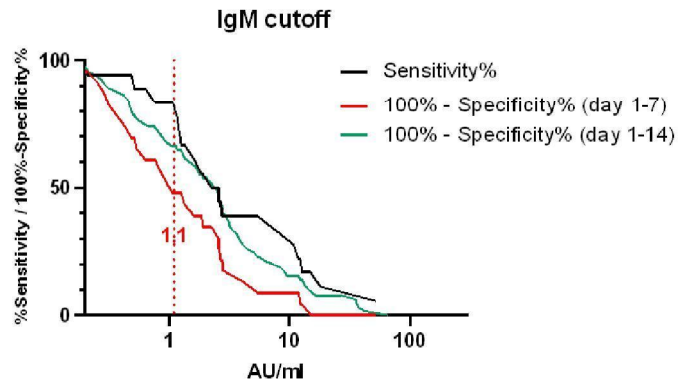
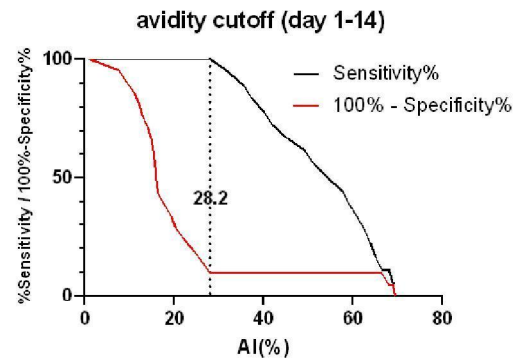
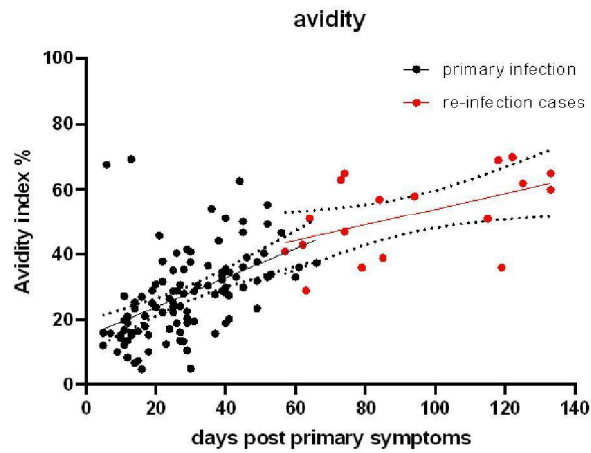
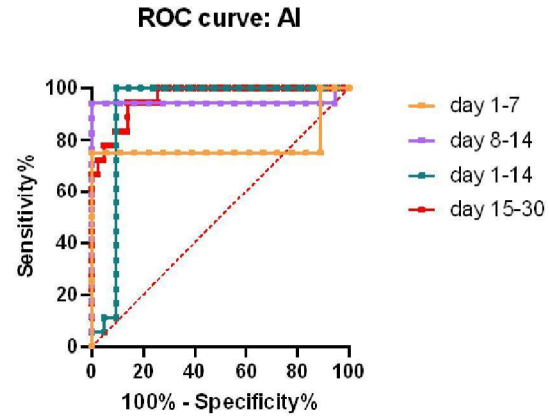
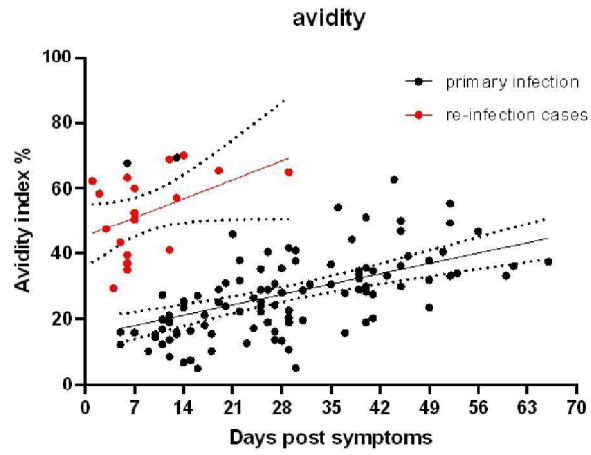


figure 3



Wantai	area	SE	z	p
d1-7	0,9908	0,00964		
d8-14	0,8095	0,05478	3,2595	0,0011
d8-14	0,8095	0,05478		
d15-30	0,7363	0,04904	0,9956	0,3194
d1-14	0,8737	0,03785		
d15-30	0,7363	0,04904	2,2180	0,0266

IgG(MIA)	area	SE	z	p
d1-7	0,9807	0,01662		
d8-14	0,9092	0,03664	1,7771	0,0755
d8-14	0,9092	0,03664		
d15-30	0,6456	0,06338	3,6007	0,0003
d1-14	0,9349	0,02581		
d15-30	0,6456	0,06338	4,2274	0,0000

IgG/IgM	area	SE	z	p
d1-7	0,9396	0,03746		
d8-14	0,9378	0,03916	0,0332	0,9735
d8-14	0,9378	0,03916		
d15-30	0,7380	0,0637	2,6733	0,0075
d1-14	0,9385	0,0358		
d15-30	0,7380	0,0637	2,7460	0,0060

avidity	area	SE	z	p
d1-7	0,7778	0,194		
d8-14	0,9444	0,05408	-0,8272	1,5919
d8-14	0,9444	0,05408		
d15-30	0,9612	0,0216	-0,2885	1,2271
d1-14	0,9066	0,0572		
d15-30	0,9612	0,0216	-0,8932	1,6282

IgM	area	SE	z	p
d1-7	0,686	0,08407		
d8-14	0,5066	0,08369	1,5123	0,1304
d8-14	0,5066	0,08369		
d15-30	0,602	0,07669	-0,8404	1,5993
d1-14	0,5615	0,07651		
d15-30	0,602	0,07669	-0,3739	1,2915

