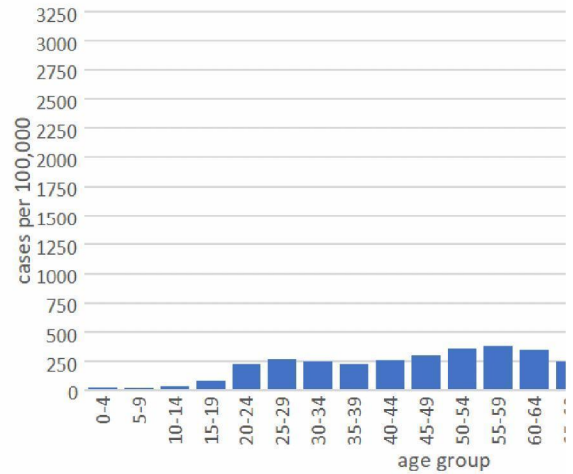
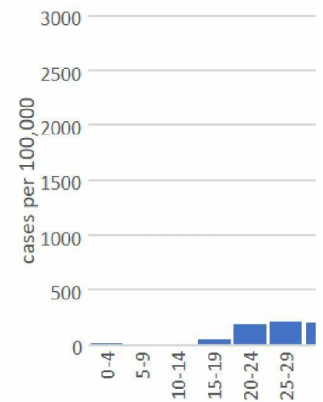
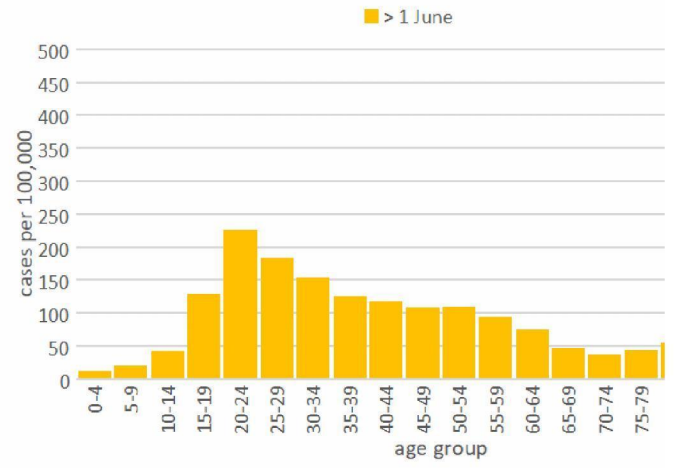


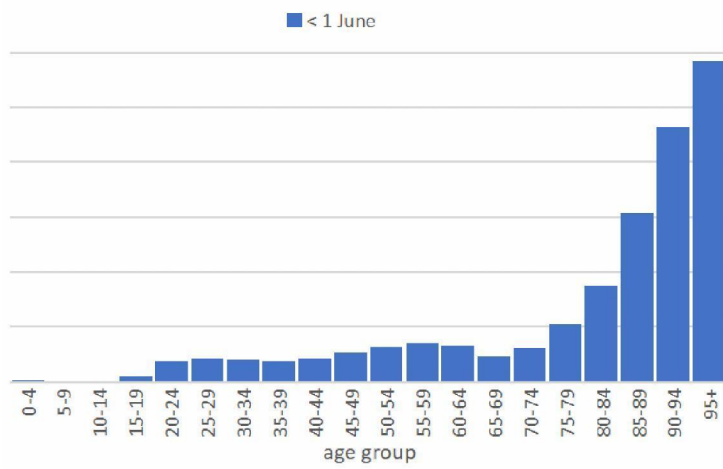
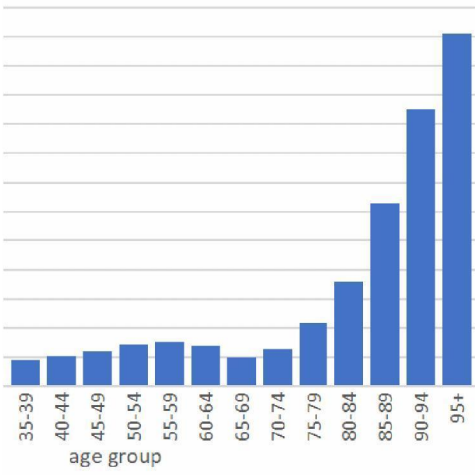
age group per 100,000 n		
0-4	19	160
5-9	14	126
10-14	29	272
15-19	83	873
20-24	229	2526
25-29	267	3042
30-34	253	2784
35-39	230	2404
40-44	259	2643
45-49	308	3648
50-54	355	4553
55-59	390	4875
60-64	354	3957
65-69	252	2509
70-74	323	3041
75-79	544	3443
80-84	901	3927
85-89	1574	4027
90-94	2378	2454
95+	3034	804



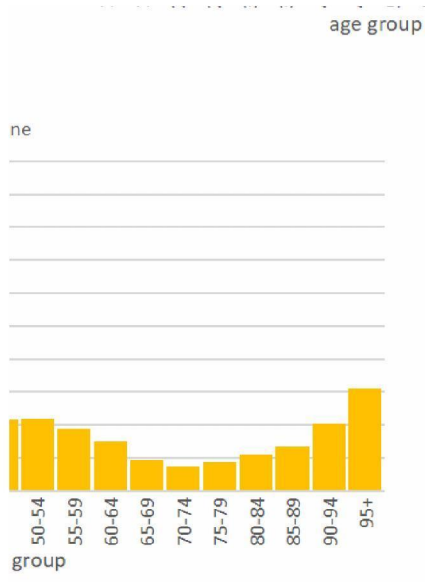
	< 1 June	> 1 June
0-4	11.5	11.5
5-9	4.3	19.2
10-14	9.5	41.2
15-19	50.6	128.3
20-24	181.9	225.6
25-29	215.4	184.4
30-34	202.9	152.7
35-39	185.8	124.1
40-44	214.4	117.4
45-49	266.4	107.8
50-54	316.7	109.5
55-59	356.4	92.8
60-64	326	75.1
65-69	235.1	46.6
70-74	309	36.5
75-79	526.1	42.5
80-84	876.3	54.1
85-89	1534.7	67.1
90-94	2322.6	100.9
95+	2923.7	153.5







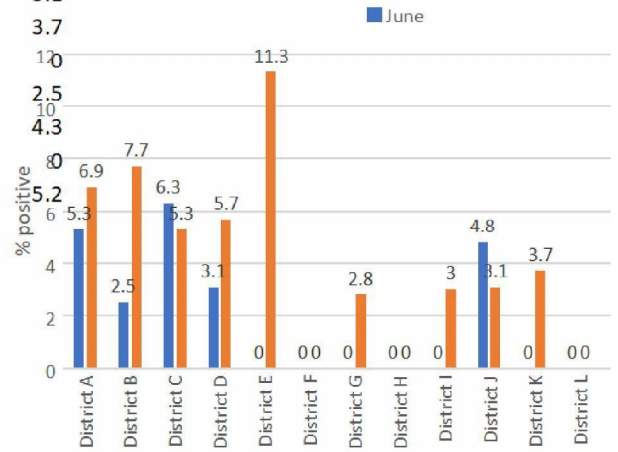
ne



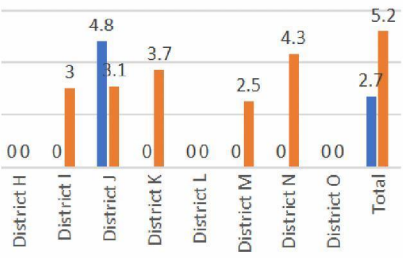
Leeftijdsgroep	voor juni			na juni				
	Totaal ger	Bevolking	Totaal ger	Totaal ger	Bevolking	Totaal gemeld_inc		
Totaal ger	46408	17407585	266.6	17076	17407585	98.1		
0-4	99	861472	11.5	99	861472	11.5	0.2%	0.6%
5-9	39	911423	4.3	175	911423	19.2	0.1%	1.0%
10-14	91	953204	9.5	393	953204	41.2	0.2%	2.3%
15-19	531	1049158	50.6	1346	1049158	128.3	1.1%	7.9%
20-24	1991	1094585	181.9	2469	1094585	225.6	4.3%	14.5%
25-29	2453	1138965	215.4	2100	1138965	184.4	5.3%	12.3%
30-34	2236	1102103	202.9	1683	1102103	152.7	4.8%	9.9%
35-39	1943	1045828	185.8	1298	1045828	124.1	4.2%	7.6%
40-44	2191	1022008	214.4	1200	1022008	117.4	4.7%	7.0%
45-49	3160	1186068	266.4	1279	1186068	107.8	6.8%	7.5%
50-54	4059	1281826	316.7	1404	1281826	109.5	8.7%	8.2%
55-59	4457	1250592	356.4	1160	1250592	92.8	9.6%	6.8%
60-64	3644	1117798	326	840	1117798	75.1	7.9%	4.9%
65-69	2342	996048	235.1	464	996048	46.6	5.0%	2.7%
70-74	2908	941219	309	344	941219	36.5	6.3%	2.0%
75-79	3331	633200	526.1	269	633200	42.5	7.2%	1.6%
80-84	3821	436056	876.3	236	436056	54.1	8.2%	1.4%
85-89	3932	256201	1534.7	172	256201	67.1	8.5%	1.0%
90-94	2395	103118	2322.6	104	103118	100.9	5.2%	0.6%
95+	781	26713	2923.7	41	26713	153.5	1.7%	0.2%
Niet vermeld	4			0				

63484

			June	July
Charlois	A	District A	5.3	6.9
Delfshaven	A	District B	2.5	7.7
Feijenoord	A	District C	6.3	5.3
Noord	A	District D	3.1	5.7
Kralingen-Crooswijk	B	District E	0	11.3
Haven	C	District F	0	0
Hilligersberg-Schiebroek	C	District G	0	2.8
Hoek van Holland	C	District H	0	0
Hoogvliet	C	District I	0	3
IJsselmonde	C	District J	4.8	3.1
Overschie	C	District K	0	3.7
Pernis	C	District L	0	1.0
Prins Alexander	C	District M	0	2.5
Rotterdam Centrum	C	District N	0	4.3
Rozenburg	C	District O	0	0
Total		Total	2.7	



June



Start date	who can be tested
27 Feb	<i>first infection was diagnosed</i>
12 Mar	only persons risk groups (aged above 70 years or with underlying medical conditions), persons w
6 Apr	health care workers outside hospitals, with symptoms are added
30 Apr	youth trainers are added
6 May	educational staff and persons working in child day-care are added
11 May	persons with professions with close contact to clients are added
18 May	caregivers, persons working in public transportation, police, enforcers, military police are adde
1 Jun	everyone with symptoms

ith severe clinical picture, and health care workers in hospitals. Contact tracing is limited

d