

**To:** [5.1.2e] [5.1.2e]@rivm.nl; [5.1.2e] [5.1.2e]@rivm.nl  
**From:** [5.1.2e]  
**Sent:** Fri 11/6/2020 4:51:42 PM  
**Subject:** RE: RIVM - second round of the CoMix study in the Netherlands  
**Received:** Fri 11/6/2020 4:51:43 PM  
[CoMix2 ipsosquestionnaire feedback.xlsx](#)

Hoi [5.1.2e] en [5.1.2e]

Hier de feedback die ik heb op de CoMix questionnaire, ik heb account 42 en 43 verbruikt. Er zijn een paar vragen die heel erg [5.1.2a] zijn (opleidingsniveau, soort werk) waarvan ik uitgegaan ben dat die in de Nederlandse versie anders zijn. Ik denk wel dat we de uiteindelijke Nederlandse versie nog moeten testen.

Ik ben er volgende week niet, maar hak vooral de knoop door over optie A of B zonder mij :-). [mijn mail daarover van vanmorgen staat hier nog onder]

Groeten, [5.1.2e]

---

**From:** [5.1.2e]  
**Sent:** vrijdag 6 november 2020 11:22  
**To:** [5.1.2e] <[5.1.2e]@rivm.nl>; [5.1.2e] <[5.1.2e]@rivm.nl>  
**Subject:** RE: RIVM - second round of the CoMix study in the Netherlands

Hoi [5.1.2e] en [5.1.2e]

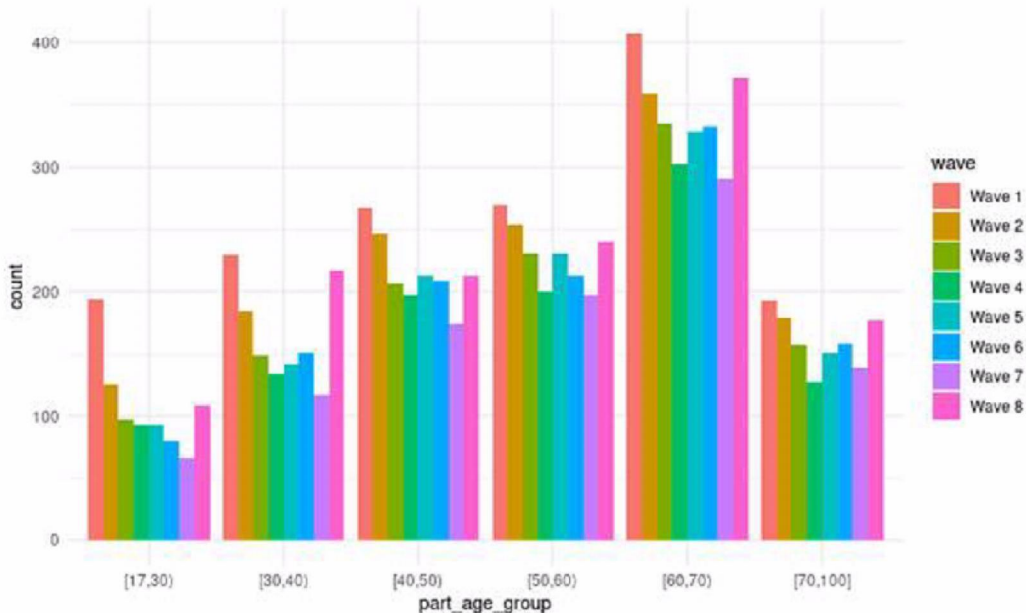
Hieronder de aantallen deelnemers zoals die in de afgelopen CoMix studie gerealiseerd zijn (wave 7 was in de zomervakantie en met wave 8 is nog iets raars aan de hand). De aantallen nemen niet zo hard af als in de tabel van Ipsos, en het panel is qua leeftijdsopbouw verre van representatief, maar de leeftijdsopbouw van de verschillende waves lijkt wel vrij constant. Ik bedenk me net dat als ze gaan aanvullen, ze waarschijnlijk geen rekening houden met leeftijden. Dan kan de leeftijdsopbouw gaan schuiven, wat weer extra correctie vereist.

Ik zit nu te denken aan optie B, maar dan met de extra voorwaarde om met 200 deelnemers per leeftijdsgroep (18-29, 30-39, 40-49, 50-59, 60-69, 70+) te beginnen en 150 0-12 jarigen en 150 13-17 jarigen (voor die laatste twee groepen vullen de ouders de vragenlijst in). [5.1.2e] wat vind jij hiervan? Je hebt meer ervaring met dit soort studies dan ik.

Ik ga vandaag nog de NL vragenlijst doorlopen met de link die gisteren gestuurd werd. [5.1.2e] misschien is het een goed idee om ook iemand te laten testen die niets van deze studie weet, maar wel van vragenlijsten. Ik weet alleen niet zo snel wie.

Groeten, [5.1.2e]

wave	participants
Wave 1	<u>1560</u>
Wave 2	<u>1347</u>
Wave 3	<u>1175</u>
Wave 4	<u>1052</u>
Wave 5	<u>1159</u>
Wave 6	<u>1145</u>
Wave 7	985
Wave 8	<u>1326</u>



**From:** 5.1.2e <5.1.2e@rivm.nl>

**Sent:** vrijdag 6 november 2020 10:41

**To:** 5.1.2e <5.1.2e@rivm.nl>; 5.1.2e <5.1.2e@rivm.nl>

**Subject:** FW: RIVM - second round of the CoMix study in the Netherlands

Hi 5.1.2e 5.1.2e

M.b.t. het budget voor de tweede CoMix studie hebben we twee scenario's aangevraagd voor de sample sizes (zie hieronder). Het verschil tussen de twee opties is EUR 26.400. 5.1.2a gaat voor optie B, maar zoals 5.1.2e eerder al aangaf heeft optie A meer statistische power. Waar willen jullie voor gaan?

#### Optie A:

For waves 2 to 10, the same respondents will be asked to participate again. An expected response rate per wave is expected, but the sample will be topped-up with fresh sample each wave to maintain a total of 1500 completes for each wave

The total cost for 10 waves of research for Option A (1,500 completed per wave) will be will be 5.1.1c

#### Optie B:

The total cost for 10 waves of research for Option B (number of completes a per table below) will be will be 5.1.1c

**Table 1: Number of completes per wave for option B**

	Number of completes
Wave 1	1500
Wave 2	1350
Wave 3	1215
Wave 4	1094
Wave 5	984
Wave 6	886
Wave 7	797
Wave 8	717
Wave 9	646
Wave 10	581

Met vriendelijke groet,

5.1.2e  
 | RIVM - Rijksinstituut voor Volksgezondheid en Milieu | EPI - Centrum Epidemiologie en Surveillance van  
 Infectieziekten  
 | 5.1.2e +31 6 5.1.2e | 5.1.2e 3720 BA Bilthoven, The Netherlands

**From:** 5.1.2e <5.1.2e@ipsos.com>  
**Sent:** donderdag 5 november 2020 16:07  
**To:** 5.1.2e <5.1.2e@rivm.nl>; 5.1.2e <5.1.2e@ipsos.com>  
**Cc:** 5.1.2e <5.1.2e@rivm.nl>; 5.1.2e <5.1.2e@rivm.nl>; 5.1.2e  
 <5.1.2e@rivm.nl>  
**Subject:** RE: RIVM - second round of the CoMix study in the Netherlands

Dear 5.1.2e

Attaches is a short note outlining the approach and costs for second round of the study. I am not sure if I sent you the Dutch translation of the questionnaire yet, so in case not that is attached also and the detailed privacy notice currently in use in 5.1.2a

The link to check the Dutch script is as follows

5.1.2h

Some notes for when checking this

- You will need to change the number highlighted. You can use any number from 41-50 for now. Each will work once only
- You will see some screens that will not be visible to respondents. Mostly these are marked with 'shown in test mode only', but just to confirm this screen Respondent Serial: 31. Current question: QMktSize will not be visible either
- For testing purpose please select Dutch when offered the language
- Again for testing purposes please select Qsample=2 FRESH SAMPLE (the wave to wave version is not ready for testing yet)
- You will need to run through both Main Sample and Parent Sample to see both routes. For Parent sample you will need to have a child aged under 18 to be able to complete this
- I have moved the question on selecting which child that the questions will be asked of to after Q29. Previously it was before Q28 but as we ask about all HH members at Q28 ad Q29 it makes more sense for this and the statement on answer about the child to after Q29.

We are testing this alongside you so there are a few things that need to be correct. I have noticed the following that needs to be fixed already but please let us know if you notice anything else in addition to these.

- The Main intro screen is not displaying properly. The html code currently showing will be removed and text formatted appropriately
- For Q23 there is space missing before the household names that are inserted
- Qp63 the text 'YOU, THE PERSON....' is in English

I am on holiday for a few days as of tomorrow, so if you have any immediate queries please let 5.1.2e know.

Kind regards

5.1.2e

**From:** 5.1.2e <5.1.2e@rivm.nl>  
**Sent:** 04 November 2020 12:18  
**To:** 5.1.2e <5.1.2e@ipsos.com>; 5.1.2e <5.1.2e@ipsos.com>  
**Cc:** 5.1.2e <5.1.2e@rivm.nl>; 5.1.2e <5.1.2e@rivm.nl>; 5.1.2e  
 <5.1.2e@rivm.nl>  
**Subject:** RE: RIVM - second round of the CoMix study in the Netherlands

**CAUTION: EXTERNAL**

Dear 5.1.2e



Many thanks for all the information and we'll be awaiting the details. In the meantime, would you be able to share the online BE survey with us once available? I understood from Hasselt University that they will run the test from today onwards, so it would be great if we could join in on the review in preparation for the NL survey.

Thanks in advance.

**Warm regards, Met vriendelijke groet,**

5.1.2e  
 | RIVM - Rijksinstituut voor Volksgezondheid en Milieu | EPI - Centrum Epidemiologie en Surveillance van  
 Infectieziekten  
 | 5.1.2e +31 6 5.1.2e | 5.1.2e 3720 BA Bilthoven, The Netherlands

**From:** 5.1.2e <5.1.2e@ipsos.com>

**Sent:** maandag 2 november 2020 12:19

**To:** 5.1.2e <5.1.2e@rivm.nl>; 5.1.2e <5.1.2e@ipsos.com>

**Cc:** 5.1.2e <5.1.2e@rivm.nl>; 5.1.2e <5.1.2e@rivm.nl>; 5.1.2e <5.1.2e@rivm.nl>

**Subject:** RE: RIVM - second round of the CoMix study in the Netherlands

Dear 5.1.2e

Thanks for getting back to me.

We have a contract for 5.1.2a for 9 waves and with a starting sample of 1500 interviews (1200 with adults and 300 with parents). The sample will reduce each wave in line with the number of completes noted below. I'll provide you with costs for both. I will come back to you with these in the next couple of days and confirm timings at the same time. In the meantime, with regards to the invites being sent out, this is done over a few days. We try to launch each wave before the weekend so you get data for weekends and weekdays.

I'll be in touch again with the costs soon.

Kind regards

5.1.2e

**From:** 5.1.2e <5.1.2e@rivm.nl>

**Sent:** 02 November 2020 11:06

**To:** 5.1.2e <5.1.2e@ipsos.com>; 5.1.2e <5.1.2e@ipsos.com>

**Cc:** 5.1.2e <5.1.2e@rivm.nl>; 5.1.2e <5.1.2e@rivm.nl>; 5.1.2e <5.1.2e@rivm.nl>

**Subject:** RE: RIVM - second round of the CoMix study in the Netherlands

**CAUTION: EXTERNAL**

Dear 5.1.2e

Many thanks for your reply and the directions. You can find my comments/questions in blue below each specific question.

- How many waves of research and how frequently would you like the survey to run?

5.1.2e we would like to stick as closely as possible to the approach being used in 5.1.2a I believe this is 9 or 10 waves total every two weeks. Could you confirm if this is correct?

- What starting sample size would you be aiming for? Previously it was 1500 completes in the first wave and then we have a good response rate wave to wave so you would probably be looking at the following sample sizes per wave over the course of 8 waves (for example)

	completes
Wave 1	1500

Wave 2	1350
Wave 3	1215
Wave 4	1094
Wave 5	984
Wave 6	886
Wave 7	797
Wave 8	717

Alternatively you could target 1500 every wave – we would continue to invite those who take part from wave 1 onwards and then top-up with fresh sample each wave to reach the target of 1500

5.1.2a both suggestions you make are good. Ideally, we would prefer to continue to target 1500 each wave so we have more options for analysis later on. However, could you confirm what the approach from 5.1.2a is for this? Also, what would be the associated difference in costs depending on the approach?

- In 5.1.2a the sample is now split so (for the first wave) we have 1200 completed with sample of adults answering on behalf of themselves and 300 completes among parents answering many of the questions on behalf of one of their children aged 0-17 (see the questionnaire for how this works)

5.1.2a 1500 participants consisting of 1200 adults and 300 parents answering for their children (0-17) would work well for us as well.

- Will the detailed privacy notice, introduction and ethics form for participants be similar to that being used already? If there will be substantial changes we just need to include our translation costs for this.

5.1.2a privacy notice, introduction and ethics could probably remain the same since the questionnaire is almost identical. However, the only consideration we could make is to formulate some sections of e.g. the introduction in a slightly different way for parents answering on behalf of their children but I believe this will not be substantial changes.

- In terms of deliverables, is it still and SPSS file to be delivered for each wave?

Data delivery in SPSS files are fine.

Additionally:

- Could you confirm if sending out the invitations will be/can be spread out over a few weekdays? This to ensure we create a response spread over different weekdays.
- If we proceed now with the preparations without delay, when would you estimate we can send out the first wave?

Thanks in advance for looking into all this. 5.1.2e from Hasselt University has also agreed for us to take part in the online practice of their survey. Could you share the URL with us once you start running this test?

If you have any other questions, please just let me know.

**Warm regards, Met vriendelijke groet,**

5.1.2e

| RIVM - Rijksinstituut voor Volksgezondheid en Milieu | EPI - Centrum Epidemiologie en Surveillance van Infectieziekten

| 5.1.2e +31 6 5.1.2e 5.1.2e 3720 BA Bilthoven, The Netherlands

**From:** 5.1.2e <5.1.2e@ipsos.com>

**Sent:** donderdag 29 oktober 2020 18:03

**To:** 5.1.2e <5.1.2e@rivm.nl>; 5.1.2e <5.1.2e@ipsos.com>

**Cc:** 5.1.2e <5.1.2e@rivm.nl>; 5.1.2e <5.1.2e@rivm.nl>

**Subject:** RE: RIVM - second round of the CoMix study in the Netherlands

Dear 5.1.2e

Thank you for your email and for your interest in a second round of the CoMix study.

We are currently making some minor amends to the Dutch version of the questionnaire and so will send it on when we have this back from our translator, I hope in the next day to so. The English version (of the 5.1.2a questionnaire) is attached for now so that you can see how the questionnaire has changed. It is also worth noting that the way in which questions on multiple contacts are asked is different in 5.1.2a than in the UK and 5.1.2a (which is still largely the same as the first round of research)

We should have the Dutch script ready first half of next week, so if 5.1.2e is happy for you to review this at the same time, then we will send the link on to you as well as soon as it is ready.

As there will be some amends necessary for use in the Netherlands, we will would not be able to launch next week alongside the first the wave of the 5.1.2a study, but we'll talk with our scripting teams and others involved here to find out what is feasible in terms of timings.

In the meantime we can prepare costs for you if you could let us know the following

- How many waves of research and how frequently would you like the survey to run?
- What starting sample size would you be aiming for? Previously it was 1500 completes in the first wave and then we have a good response rate wave to wave so you would probably be looking at the following sample sizes per wave over the course of 8 waves (for example)

	completes
Wave 1	1500
Wave 2	1350
Wave 3	1215
Wave 4	1094
Wave 5	984
Wave 6	886
Wave 7	797
Wave 8	717

- Alternatively you could target 1500 every wave – we would continue to invite those who take part from wave 1 onwards and then top-up with fresh sample each wave to reach the target of 1500
- In 5.1.2a the sample is now split so (for the first wave) we have 1200 completed with sample of adults answering on behalf of themselves and 300 completes among parents answering many of the questions on behalf of one of their children aged 0-17 (see the questionnaire for how this works)
- Will the detailed privacy notice, introduction and ethics form for participants be similar to that being used already? If there will be substantial changes we just need to include our translation costs for this.
- In terms of deliverables, is it still and SPSS file to be delivered for each wave?

We'll look forward to hearing from you and working with you too.

Kind regards

5.1.2e

5.1.2e, 5.1.2e  
5.1.2e

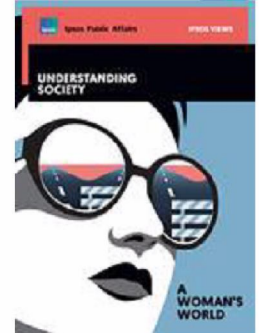
---

Ipsos MORI  
3 Thomas More Square  
London E1W 1YW  
UK





GAME CHANGERS Ipsos



**From:** 5.1.2e <5.1.2e@rivm.nl>

**Sent:** 29 October 2020 15:40

**To:** 5.1.2e <5.1.2e@ipsos.com>; 5.1.2e <5.1.2e@ipsos.com>

**Cc:** 5.1.2e <5.1.2e@rivm.nl>; 5.1.2e <5.1.2e@rivm.nl>

**Subject:** RIVM - second round of the CoMix study in the Netherlands

**CAUTION: EXTERNAL**

Dear 5.1.2e

I trust you are well. I have received your contact information through 5.1.2e fom Hasselt University, since I understand you are involved in setting-up the second round of the CoMix Study. Just as for 5.1.2a and the UK, RIVM would now like to collaborate directly with IPSOS to set-up the second round of the CoMix study in the Netherlands. This second round will therefore be financed by RIVM to IPSOS directly.

As for now, it seems the survey will remain as close as possible to the one in 5.1.2a to allow for international comparison, just as we did during the first round in March-Aug (possibly with some minor adjustments/additions for the Dutch context). Could you, therefore, kindly share the latest version of the survey in Dutch, and what you need exactly from us in terms of information and documentations at this moment? Ideally, I can imagine we would also like to stay as close as possible to the timing/protocol used in 5.1.2a 5.1.2e for example suggested we could join the online simulation of the survey and then provide specific feedback for the NL. Would this be possible?

Many thanks in advance and looking forward to working together on this!

**Warm regards,**

5.1.2e

| RIVM - Rijksinstituut voor Volksgezondheid en Milieu | EPI - Centrum Epidemiologie en Surveillance van Infectieziekten

5.1.2e | +31 6 5.1.2e 5.1.2e, 3720 BA Bilthoven, The Netherlands

Dit bericht kan informatie bevatten die niet voor u is bestemd. Indien u niet de geadresseerde bent of dit bericht abusievelijk aan u is verzonden, wordt u verzocht dat aan de afzender te melden en het bericht te verwijderen. Het RIVM aanvaardt geen aansprakelijkheid voor schade, van welke aard ook, die verband houdt met risico's verbonden aan het elektronisch verzenden van berichten.

[www.rivm.nl](http://www.rivm.nl) De zorg voor morgen begint vandaag

This message may contain information that is not intended for you. If you are not the addressee or if this message was sent to you by mistake, you are requested to inform the sender and delete the message. RIVM accepts no liability for damage of any kind resulting from the risks inherent in the electronic transmission of messages.

[www.rivm.nl/en](http://www.rivm.nl/en) Committed to health and sustainability

Dit bericht kan informatie bevatten die niet voor u is bestemd. Indien u niet de geadresseerde bent of dit bericht abusievelijk aan u is verzonden, wordt u verzocht dat aan de afzender te melden en het bericht te verwijderen. Het RIVM aanvaardt geen aansprakelijkheid voor schade, van welke aard ook, die verband houdt met risico's verbonden aan het elektronisch verzenden van berichten.  
[www.rivm.nl](http://www.rivm.nl) *De zorg voor morgen begint vandaag*

This message may contain information that is not intended for you. If you are not the addressee or if this message was sent to you by mistake, you are requested to inform the sender and delete the message. RIVM accepts no liability for damage of any kind resulting from the risks inherent in the electronic transmission of messages.  
[www.rivm.nl/en](http://www.rivm.nl/en) *Committed to health and sustainability*

Dit bericht kan informatie bevatten die niet voor u is bestemd. Indien u niet de geadresseerde bent of dit bericht abusievelijk aan u is verzonden, wordt u verzocht dat aan de afzender te melden en het bericht te verwijderen. Het RIVM aanvaardt geen aansprakelijkheid voor schade, van welke aard ook, die verband houdt met risico's verbonden aan het elektronisch verzenden van berichten.  
[www.rivm.nl](http://www.rivm.nl) *De zorg voor morgen begint vandaag*

This message may contain information that is not intended for you. If you are not the addressee or if this message was sent to you by mistake, you are requested to inform the sender and delete the message. RIVM accepts no liability for damage of any kind resulting from the risks inherent in the electronic transmission of messages.  
[www.rivm.nl/en](http://www.rivm.nl/en) *Committed to health and sustainability*