

Figure 1

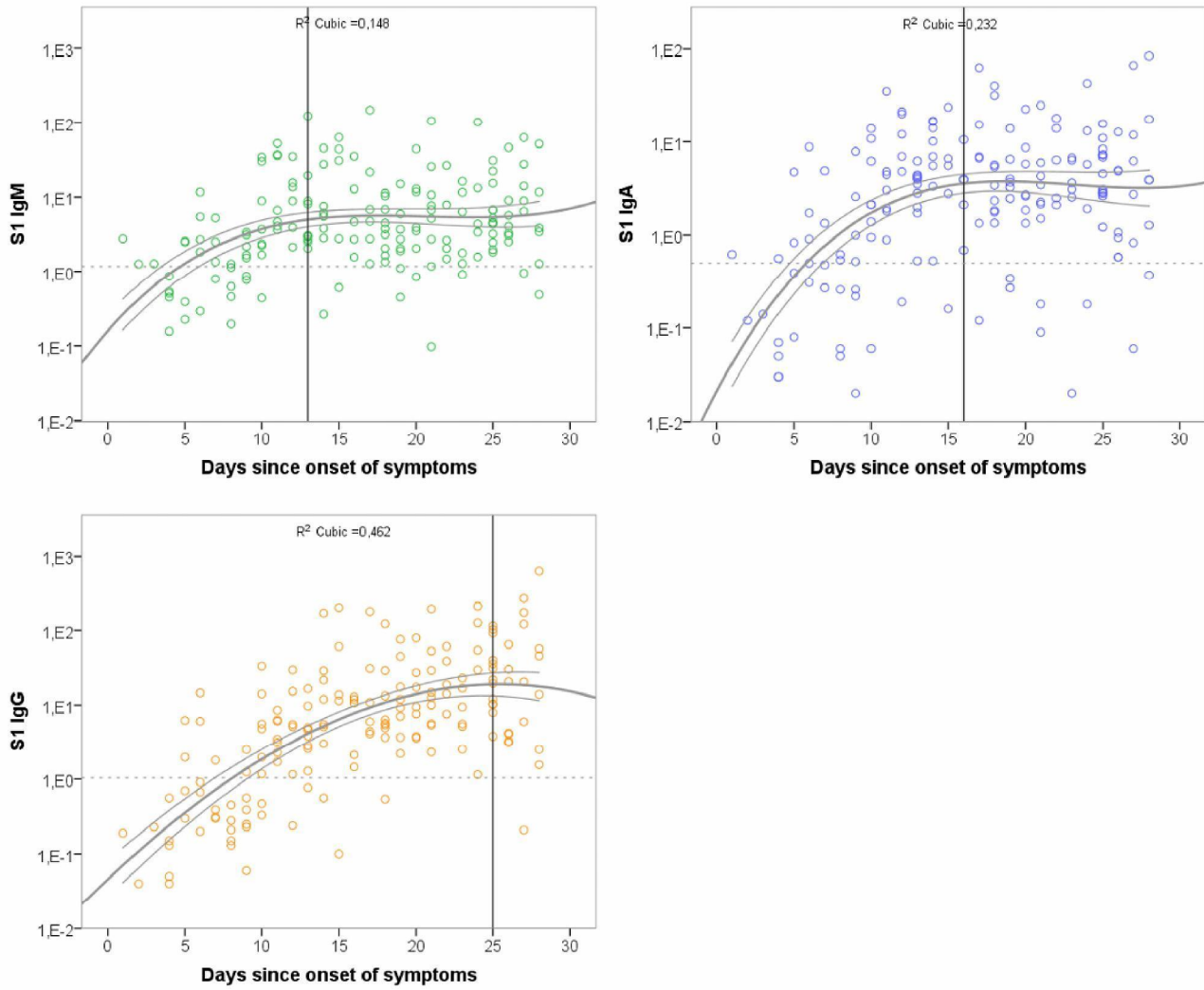
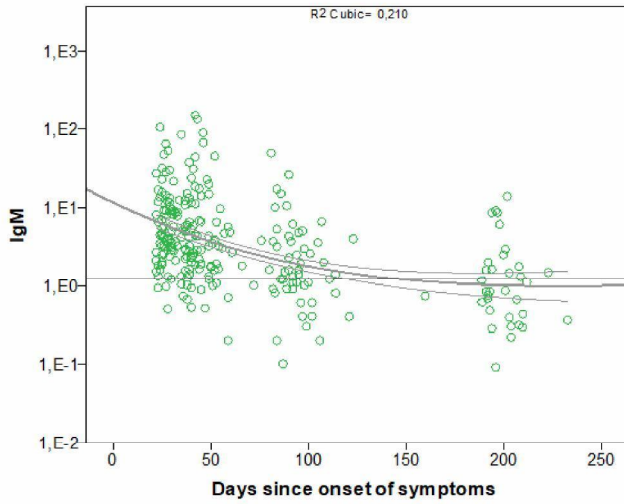
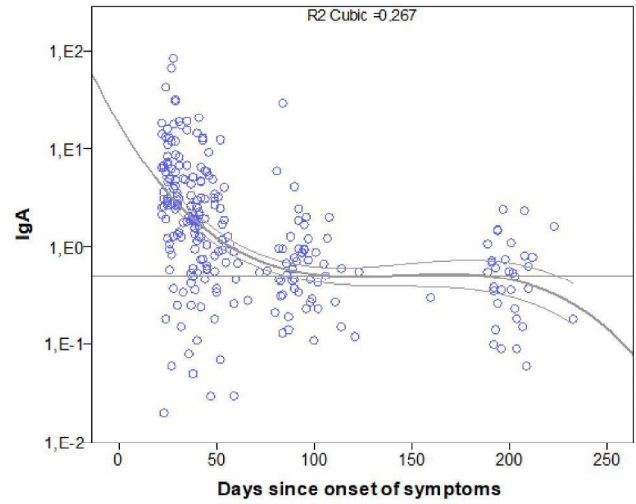


Figure 2

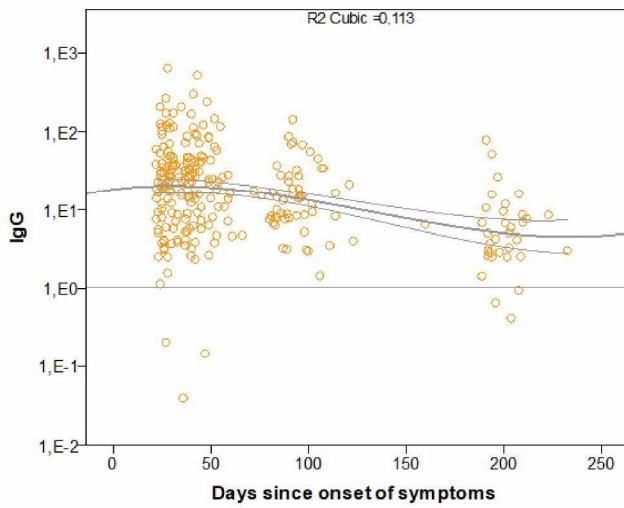
A



B



C



D

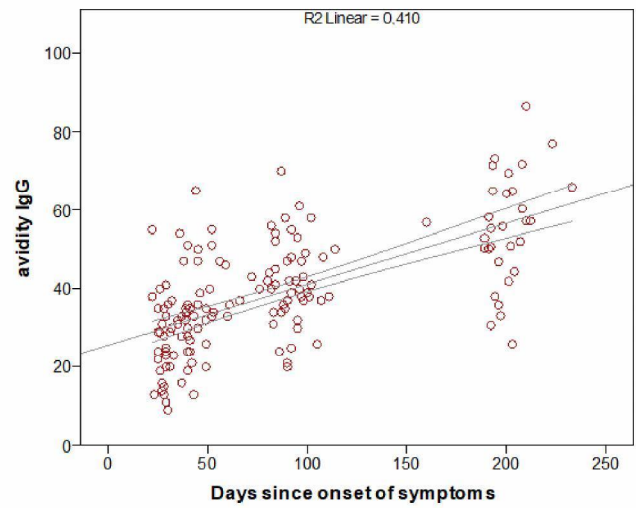


Table 1A. Demographics of the FFX and PiCo study and days since onset of symptoms, and antibody levels

study	Age	Sex (female)	Days since symptoms	IgG	IgA	IgM	Avidity IgG	IgG positive	IgA positive	IgM positive
sample	Mean (SD)	N (%)	GMC (95% CI)	GMC (95% CI)	GMC (95% CI)	GMC (95% CI)	GMC (95% CI)	n/N (%)	n/N (%)	n/N (%)
FFX1	36.6 (14.7)	46 (58.2)	11.7 (+/-5.93)	1.85 (-5.92-9.62)	1.41 (-0.59-3.40)	2.98 (0.31-5.66)	17.5 (13.7-21.9)	47/79 (59.5)	58/79 (73.4)	61/79 (77.2)
FFX2			27.4 (+/-5.8)	22.2 (3.30-41.2)	3.50 (0.60-6.39)	5.66 (1.07-10.3)	25.7 (22.4-29.1)	79/79 (100)	73/79 (92.4)	74/79 (93.7)
FFX3			45.1 (+/-6.99)	19.8 (7.43-32.12)	1.38 (0.44-2.32)	4.08 (-1.10-9.25)	35.6 (31.7-39.6)	70/71 (98.6)	57/71 (80.3)	62/71 (87.3)
PiCo1			22.2	13.30	2.91	6.66	20.68	54/54	48/54	50/54

Figure S1

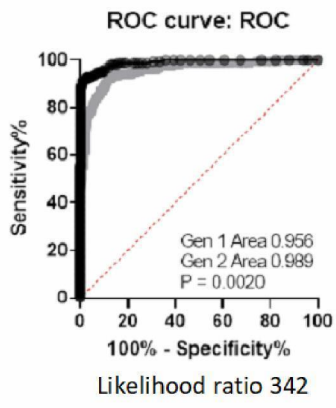


Figure S2

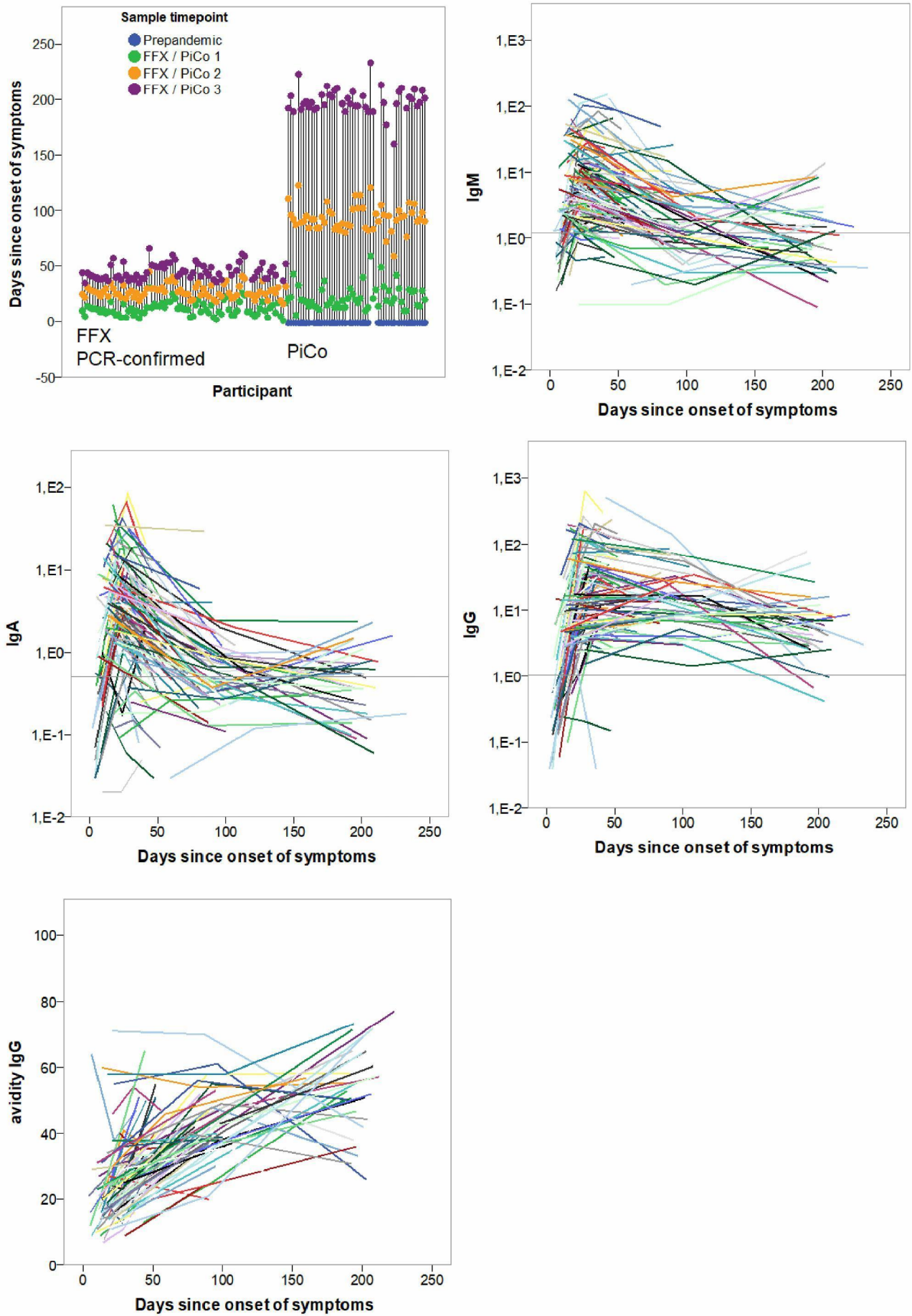


Figure S3

