



Council of the European Union  
General Secretariat

**Brussels, 24 February 2021**

**WK 2599/2021 INIT**

**LIMITE**

**SAN  
SOC  
EMPL  
ECOFIN**

WORKING PAPER

*This is a paper intended for a specific community of recipients. Handling and further distribution are under the sole responsibility of community members.*

**WORKING DOCUMENT**

---

From:	General Secretariat of the Council
To:	Working Party on Pharmaceuticals and Medical Devices (General)
Subject:	Informal videoconference of the members of the Working Party on Pharmaceuticals and Medical devices on 23 February 2021 - Presentation by the European Commission

---

Delegations will find enclosed the presentation made by the European Commission on "Recovery and Resilience Facility - Health system reforms and investments".



# Recovery and Resilience Facility

## Health system reforms and investments

*Council Working Group (EPSCO Health) on 23/02/2021*

5.1.2e 5.1.2e 5.1.2e 5.1.2e , 5.1.2e

*Unit "Performance of national health systems"*

*Directorate-General for Health and Food Safety*

## Recovery and Resilience Facility (RRF)

- The Commission proposed the RRF in May 2020 as the centrepiece of the Next Generation EU recovery instrument.
- Entry-into-force: 19 Feb 2021



## RECOVERY AND RESILIENCE FACILITY

# Flagship areas for investments and reforms

### POWER UP

CLEAN TECHNOLOGIES AND RENEWABLES

### RENOVATE

ENERGY EFFICIENCY OF BUILDINGS

### RECHARGE AND REFUEL

SUSTAINABLE TRANSPORT AND CHARGING STATIONS

### CONNECT

ROLL-OUT OF RAPID BROADBAND SERVICES

### MODERNISE

DIGITALISATION OF PUBLIC ADMINISTRATION

### SCALE-UP

DATA CLOUD CAPACITIES AND SUSTAINABLE PROCESSORS

### RESKILL AND UPSKILL

EDUCATION AND TRAINING TO SUPPORT DIGITAL SKILLS



# National Recovery and Resilience Plans (RRPs)

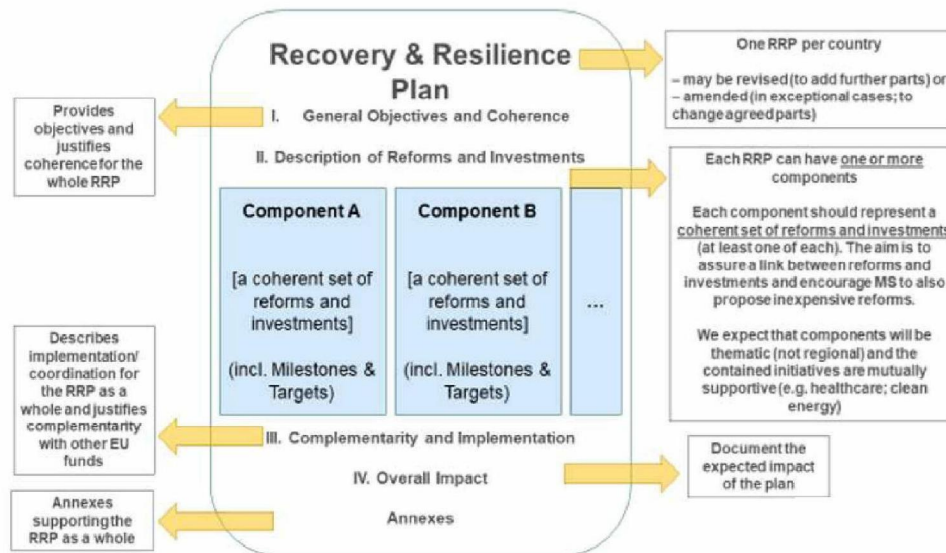
- The Proposal on **Recovery and Resilience Facility** outlines the information MSs need to provide in their **Recovery and Resilience Plans**
- RRP provide an overview of reforms and investments in line with the objectives of the RRF and Country Specific Recommendations (esp. 2019 and 2020) and EU flagships
- Focus on
  - Promoting economic, social and territorial cohesion (can be relevant for food systems)
  - Strengthening economic & social resilience
  - Mitigating the socio-economic impact of the crisis
  - Supporting the green & digital transitions (can be relevant for food systems)

## Each RRP to include

- min 37% of climate related expenditure
- min 20% of expenditure related to digital (including e-health)

# Strategic Guidance to MSs for preparing Recovery and Resilience Plans

- **Detailed guidance** on how best to present the RRP, including environmental impacts (“Do No Significant Harm”), together with standard templates **easily reachable** from the Commission website: [https://ec.europa.eu/info/departments/recovery-and-resilience-task-force\\_en#Documents](https://ec.europa.eu/info/departments/recovery-and-resilience-task-force_en#Documents)



- Member States may submit their RRP at the latest by **30 April 2021**
- They may also wish to send a draft plan as from **15 October 2020**

## Assessing the national plans

### Commission's assessment will consider whether the plans:



- contribute to effectively addressing challenges identified in the relevant **country-specific recommendations**;



- contain measures that effectively contribute to the **green** and **digital transitions**;



- contribute to **strengthening the growth potential**, job creation and economic and social resilience of the Member State.

→ Commission's assessment will be **approved by the Council**

# Guidance to MSs for preparing Recovery and Resilience Plans



Commission staff working document - Guidance to Member States Recovery and Resilience Plans - Part

1

22 January 2021

English (683.3 KB - PDF)

Download 

- “As a rule, the Recovery and Resilience Facility should only finance **costs that are non-recurrent** in nature and fall within the time horizon of the Recovery and Resilience Plan.”
- “Both in preparatory work and implementation, **consultations** should be conducted in accordance with the national legal framework and involve as relevant local and regional authorities, social partners, civil society organisations, youth organisations and other **relevant stakeholders**”
- “Member States should look at the full set of **country-specific recommendations** addressed to them by the Council, in particular under the 2019 and 2020 Semester cycles.”



# Identification of health care challenges: Results of the 2020 European Semester

- Health Country Specific Recommendations (CSRs) for **15 countries in 2019**:
  - AT, BG, CY, FI, HU, IE, EL, LV, LT, MT, PL, PT, RO, SK (2 CSRs), SI

- Health CSRs for **all countries in 2020**

Main issues: Resilience of health systems, availability of critical medical products, financial capacity of health systems, health work force shortages and needs, deployment and infrastructure for eHealth, access to care (including differences between regions), quality and availability of care, shift from hospital to outpatient and primary care, coordination and integration of care.

**RRF support to health in the Member States should address 2019 and 2020 health CSRs**

# Post-COVID-19 challenges for health systems

## BUDGET

Insufficient financing for health investments;

Additional strain on health system's revenues.

## WORKFORCE

Shortages of health workers;

Skills mismatch.

## CARE ORGANISATION

Limited coordination and integration of care;

Potential for more e-health and telemedicine;

Weak primary and ambulatory care.

## CRISIS RESPONSE

Supply chains for critical equipment and medicine;

Lack of infrastructure.

## ACCESS

Obstacles in access to healthcare due to emergency;

Obstacles for vulnerable groups.

## The European Semester and link with RRF (I)

- The Semester is a **well-established framework** for policy coordination of the recovery and the twin transition.
- It will be **temporarily adapted** to address overlapping deadlines:
  - Member States: to submit one document containing both the National Reform Programme and the **Recovery and Resilience Plan**.
  - No country report, but an **analytical document** assessing substance of the recovery and resilience plan.

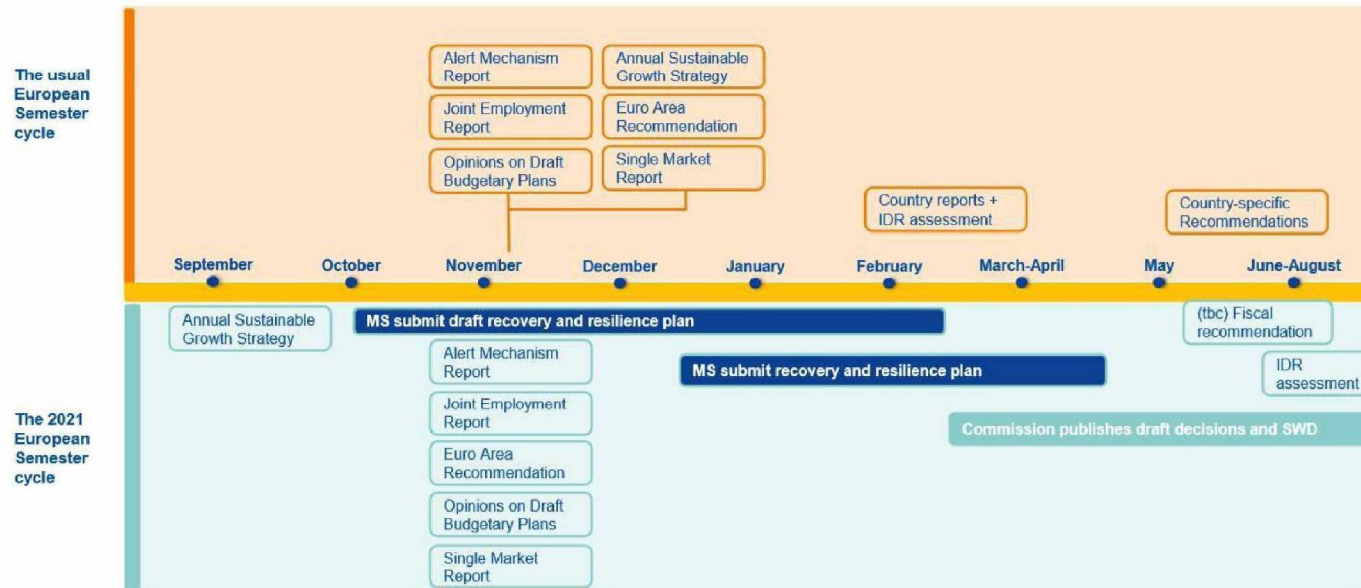


## The European Semester and link with RRF (II)

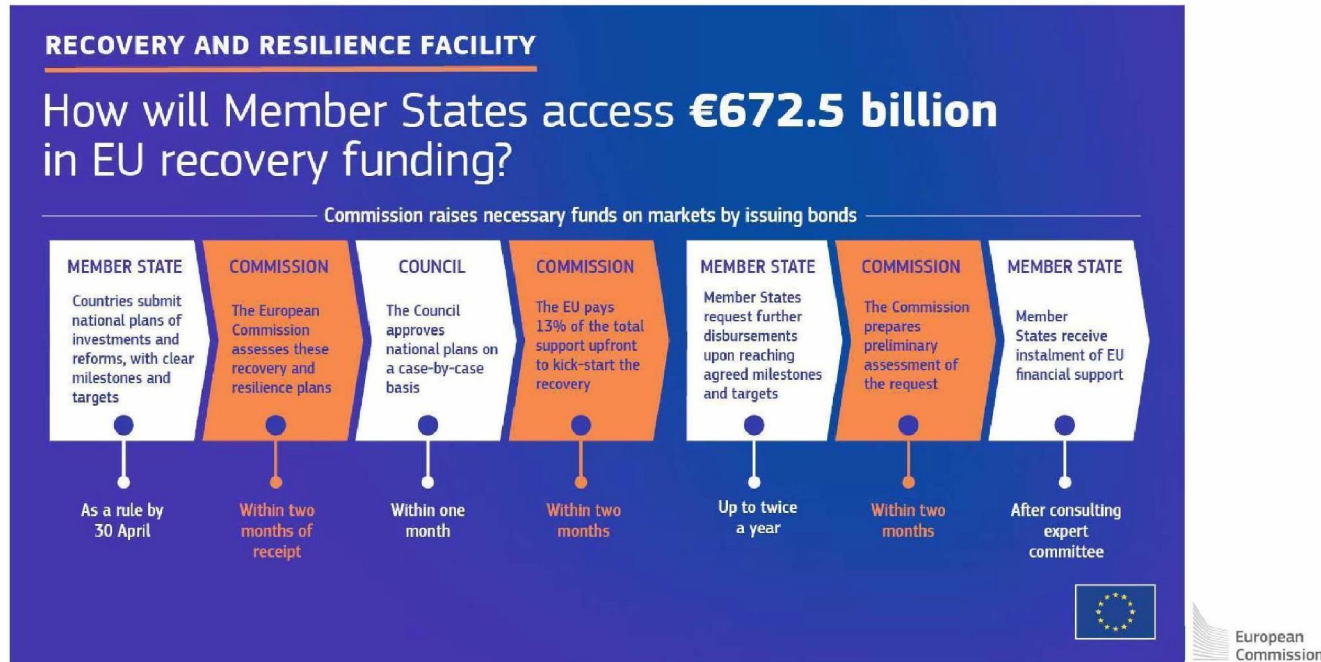
- No country-specific recommendations foreseen in 2021.
- Continued surveillance of **macroeconomic imbalances**, focus on COVID-19.
- **Reporting activities** under post-programme surveillance and **enhanced surveillance** will be **aligned** with new timetable of the Semester.



# Implementation of Recovery and Resilience Facility as part of the European Semester



## Overall RRF Timelines



## Support for Member States

- Commission created **website with FAQ** to help Member States with the new situation:
  - <https://webgate.ec.europa.eu/fpfis/wikis/pages/viewpage.action?spaceKey=recover&title=RRF+-+Frequently+asked+questions>
- The website is frequently updated to address possible uncertainties. It is accessible by Member States only **via their contact points**
- Health Ministries are invited to liaise with their Member State's contact point during the RRP preparation.
- **For general information see the RRF website of the Commission:**

[https://ec.europa.eu/info/business-economy-euro/recovery-coronavirus/recovery-and-resilience-facility\\_en](https://ec.europa.eu/info/business-economy-euro/recovery-coronavirus/recovery-and-resilience-facility_en)

# Thank you

© European Union 2020

Unless otherwise noted the reuse of this presentation is authorised under the [CC BY 4.0](https://creativecommons.org/licenses/by/4.0/) license. For any use or reproduction of elements that are not owned by the EU, permission may need to be sought directly from the respective right holders.

