

Eerste data van 3 labs

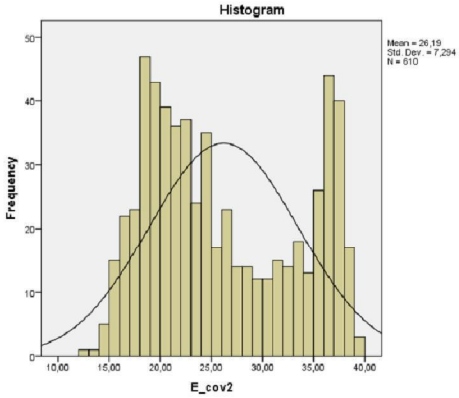
Periode September – maart (niet volledig)

- Lab A: 600 – 3000 positieve PCR resultaten per maand
- Lab B: 1000 – 5000 positieve PCR resultaten per maand
- Lab C: 300 – 700 positieve PCR resultaten per maand
- Lab D: 500 – 2000 positieve PCR resultaten per maand

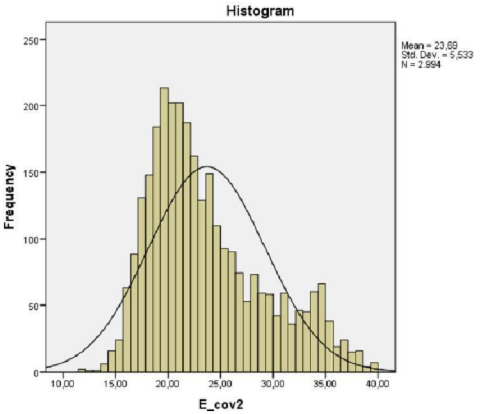
Vraag: Aandeel PCR resultaten Ct-waarde > 30 van totaal aantal positieve PCRen van de GGD, waarbij alleen de 1e test van een persoon wordt meegenomen, tenzij weer een nieuwe episode (na 2 maanden)

(Dit laatste niet overal gelukt, maar veelal betreft het unieke personen)

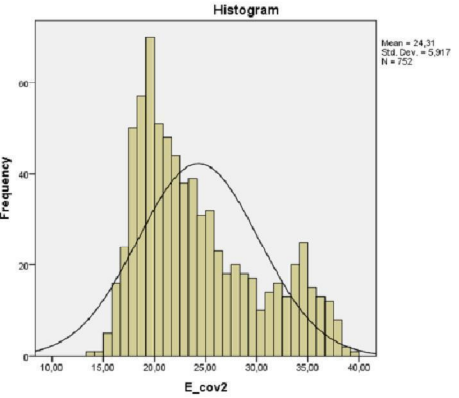
Lab A



Sept. n= 610

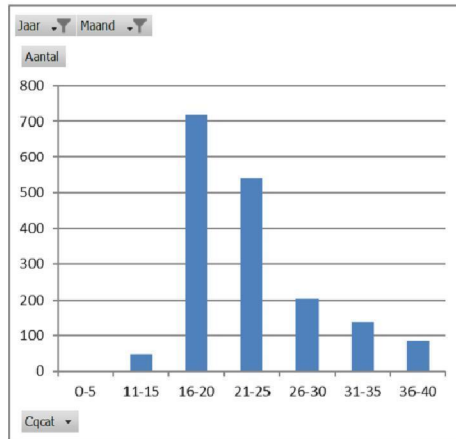


Dec. n= 2994

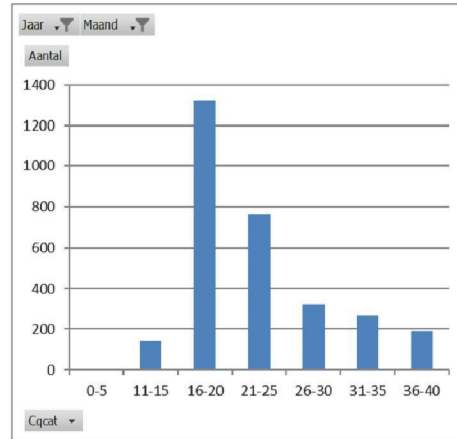


Mrt. n= 752

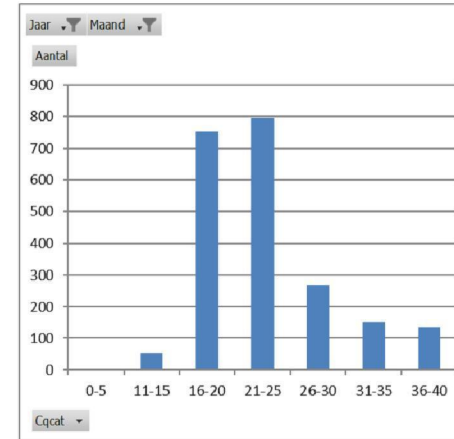
Lab B



Sept. n= 1730



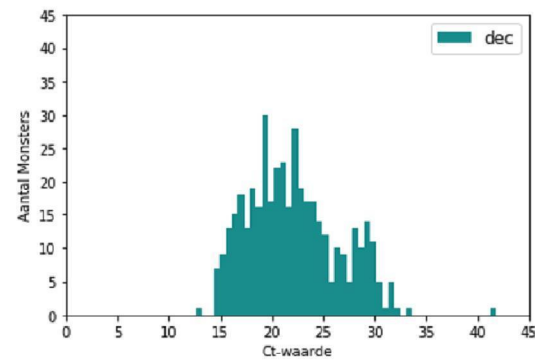
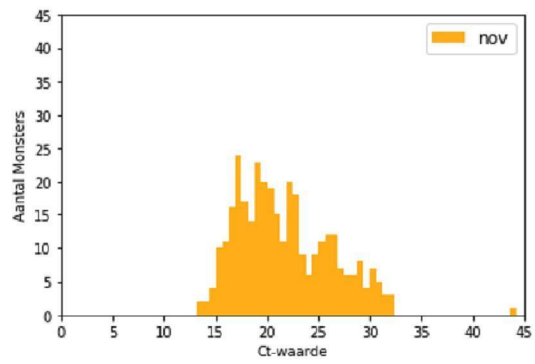
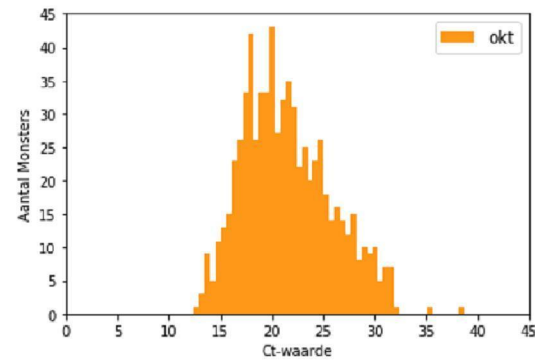
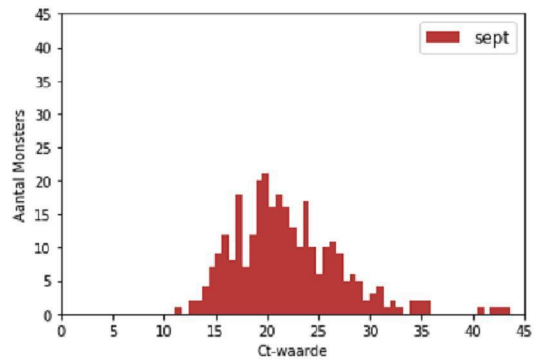
Dec. n= 3009



Mrt. n= 2155

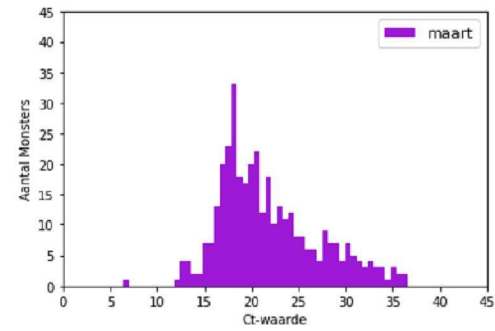
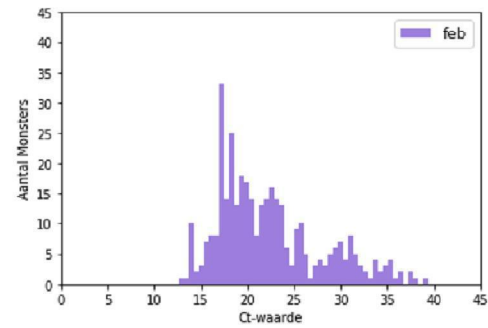
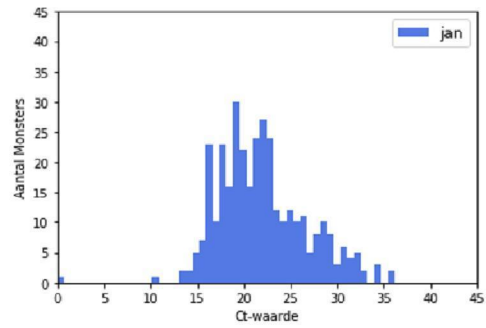
Lab C: Ct-waarden per maand

NB gelijke y-assen

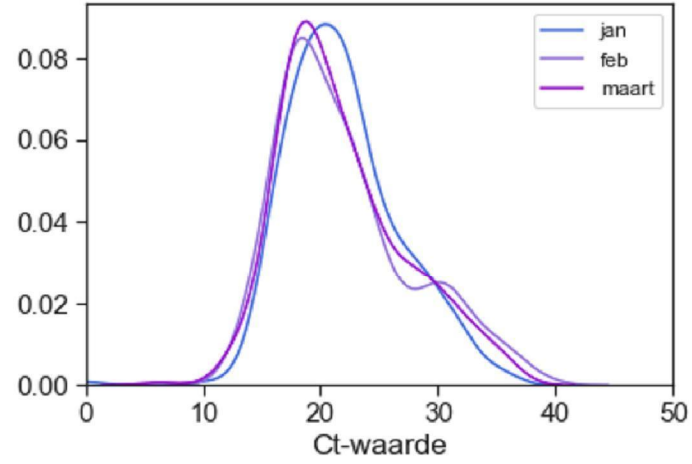
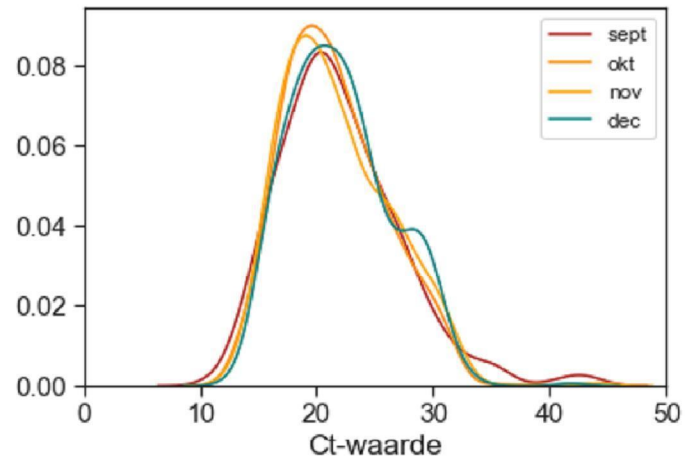


Ct-waarden per maand

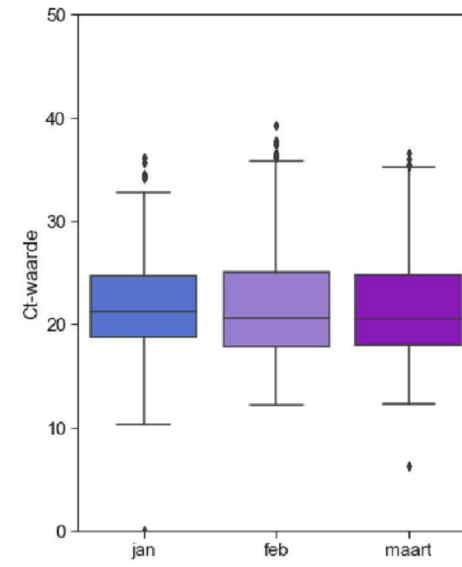
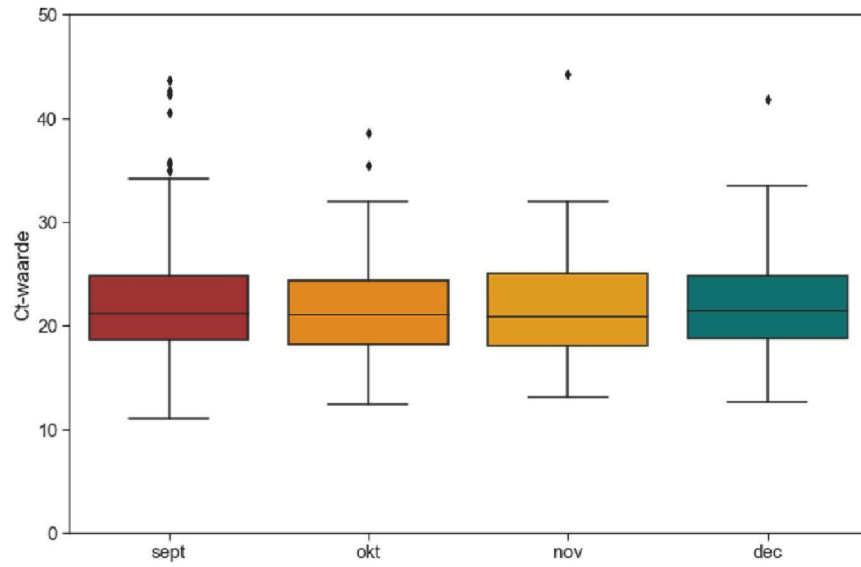
NB gelijke y-assen



KDE plot



Boxplots Ct-waarde per maand

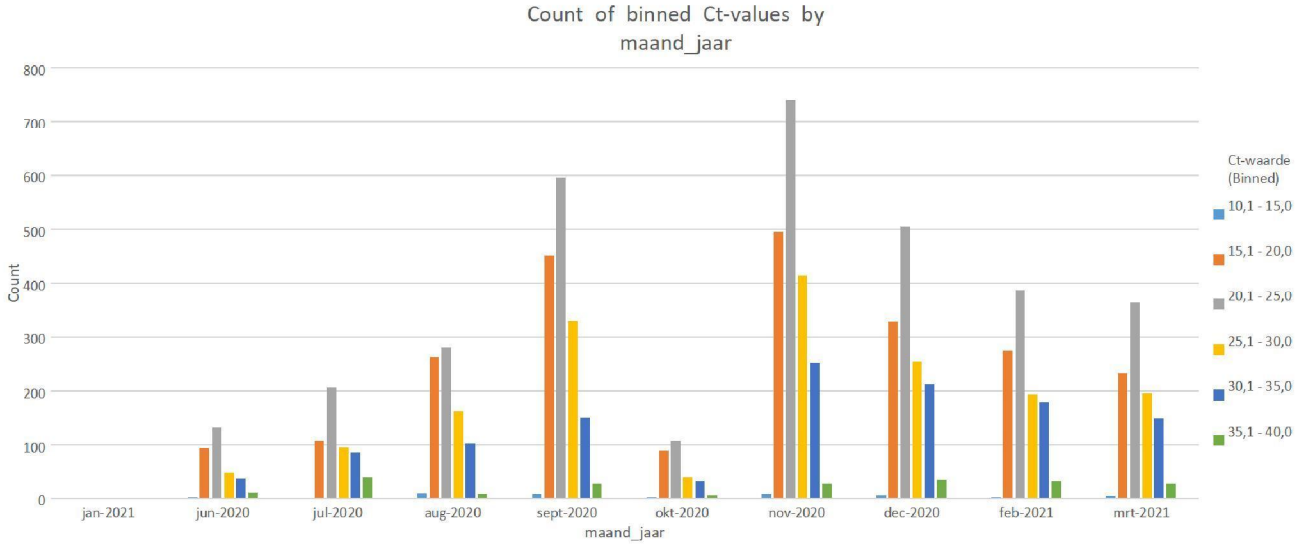


Beschrijvende statistiek Ct-waarden

Maand	Aantal monsters	Ct waarde (gemiddeld)	Ct waarde (mediaan)	Ct 30+ (aantal)	Ct 32+ (aantal)	Ct 35+ (aantal)	Ct30+ (%)	Ct32+ (%)	Ct35+ (%)
sept	298	22.0	21.2	21	13	8	7	4	3
okt	705	21.5	21.0	28	2	2	4	0	0
nov	335	21.7	20.9	19	1	1	6	0	0
dec	417	22.1	21.6	17	2	1	4	0	0
jan	344	21.9	21.3	25	9	2	7	3	1
feb	357	22.3	21.1	49	25	12	14	7	3
maart*	366	21.8	20.4	37	19	6	10	5	2

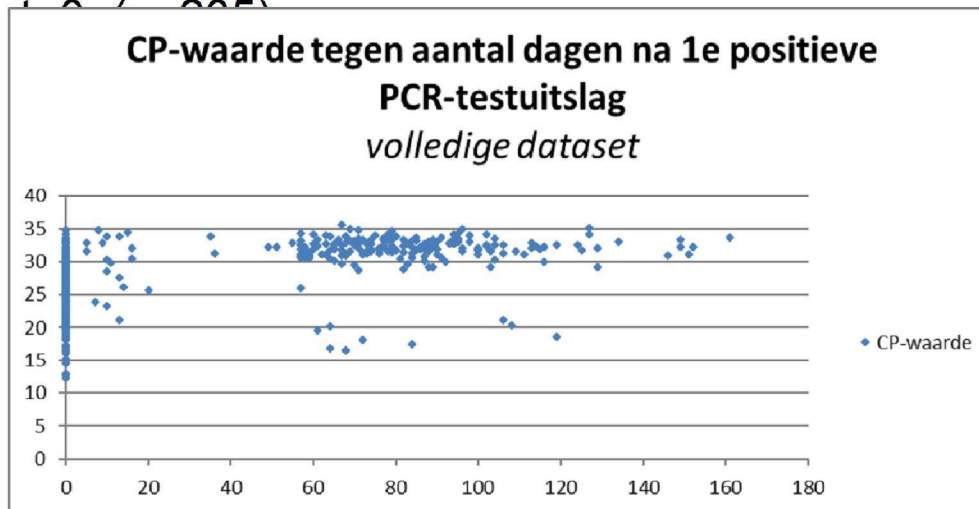
*t/m 23 maart

Lab D



Lab E

Alle personen met tenminste 2 positieve uitslagen, én waarvan de eerste en de laatste positieve bevinding tenminste 8 weken uit elkaar lagen. Scatterplot, waarbij de eerste positieve bevinding op



Percentage Ct > 30 per maand (4 labs)

