



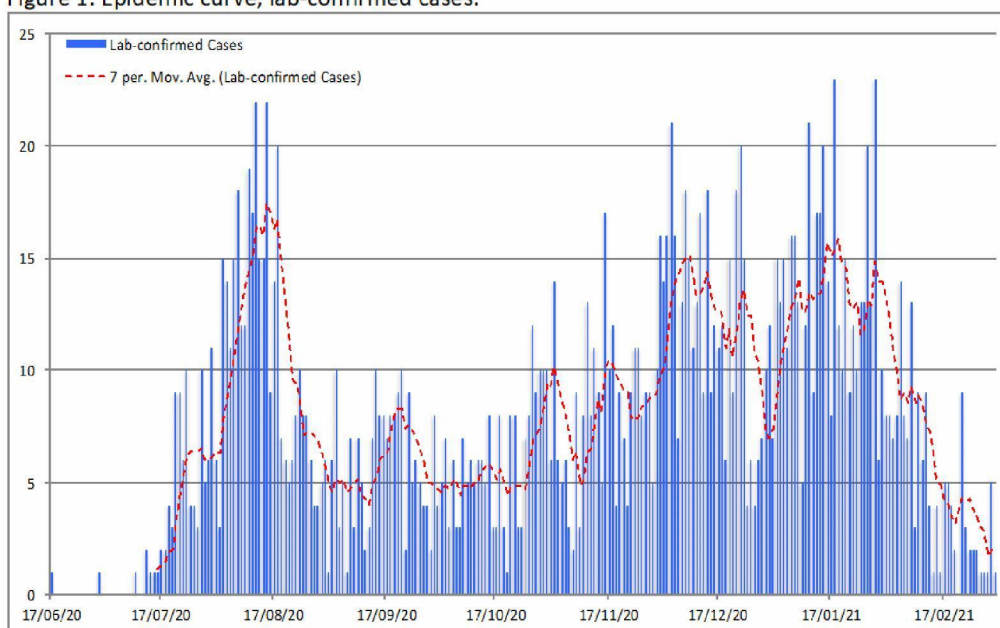
Collective Prevention Services

COVID-19 Response Overview 15th March 2021

Epidemiology

A total of **2085 lab-confirmed cases** have been recorded on Sint Maarten as of midday Monday 1st March 2021. Sint Maarten is trending at **3-5 cases per day** (Figure 1).

Figure 1. Epidemic curve, lab-confirmed cases.



Age Distribution

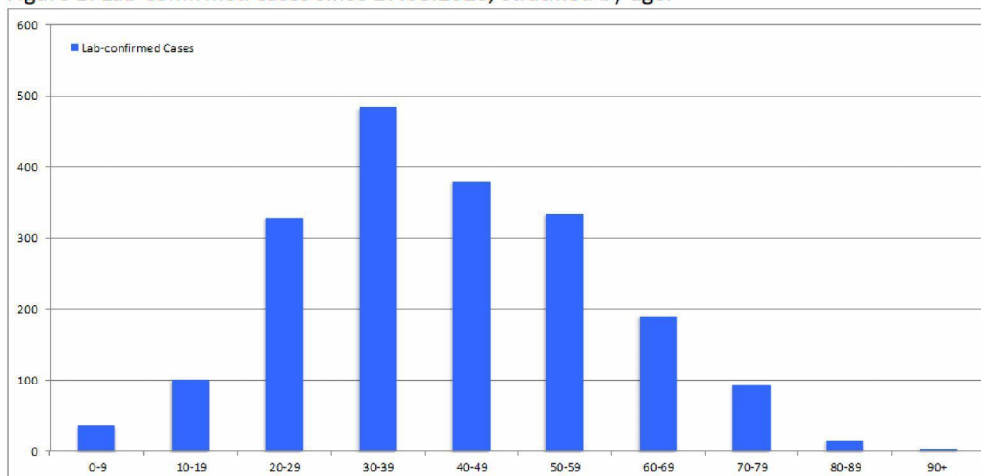
Cases stratified by age show that 7% of cases fall within the 0-19 age group (Figure 2). A further 77.6% of cases fall between the ages of 20 to 59 with the remaining 15.4% falling within the 60+ age group (Figure 2).



Collective Prevention Services

COVID-19 Response Overview 15th March 2021

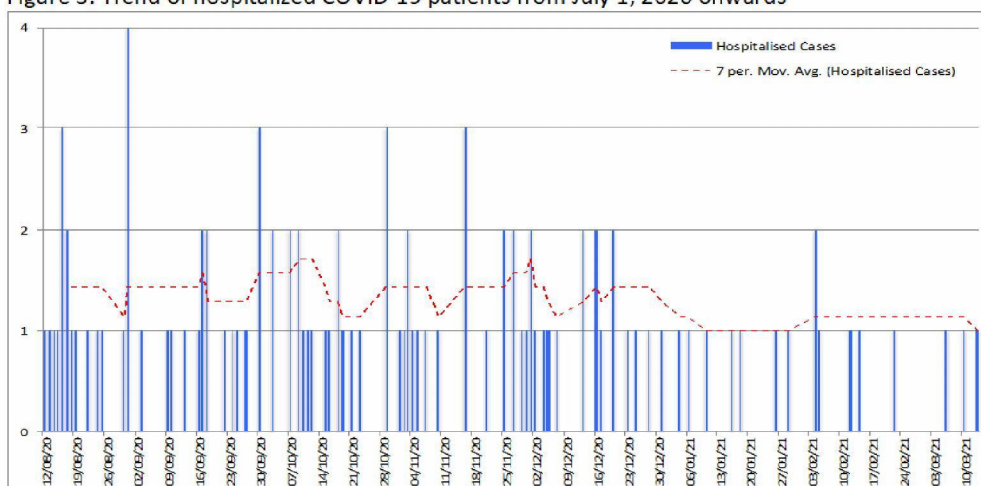
Figure 2. Lab-confirmed cases since 27.08.2020, stratified by age.



Hospitalizations and Deaths

Since the 1st July 2020, a total **111 patients have been hospitalised** in the Sint Maarten Medical Centre due to COVID-19. The number of COVID-19 admissions has stabilised and is trending at 1 per week (Figure 3). A total of **12 persons have died from COVID-19** related illness (6 males; 6 females; aged between 41-92 years) since 1st July 2020.

Figure 3. Trend of hospitalized COVID-19 patients from July 1, 2020 onwards





Collective Prevention Services

COVID-19 Response Overview 15th March 2021

Active clusters

CPS is currently monitoring **0 active clusters**.

Schools

Schools have recorded a total of **100 cases** (40 teachers; 58 students; 2 ancillary staff) and **1 cluster**.

Travel Restrictions

As of January 27, 2021, Sint Maarten has imposed a travel ban from certain countries including the UK, South Africa and South America. The reason for this is due to three new variants of the COVID-19 virus that are circulating worldwide, which are more infectious than the original COVID-19 strain.

These variants have originated in the UK (B.1.1.7), South Africa (B.1.351) and Brazil (P1). Besides these variants of concern, other variants of the COVID-19 virus are circulating. Some of these may develop into more harmful variants over time, while others will keep the same characteristics as the original COVID-19 virus.

The table below provides an overview of the most common variants that are circulating in the world, their origin, spread, characteristics and whether they have been detected on Sint Maarten to date.

CPS will continue to monitor these global trends, assess the risk and advise the Minister of VSA accordingly on any travel restrictions.



Collective Prevention Services

COVID-19 Response Overview 15th March 2021

Table. COVID-19 variants as of March 4, 2021

COVID-19 variants	Origin	Spread	Characteristics compared to non-variant COVID-19	Detected in SXM
B.1.1.7	UK	Detected in 83 countries. Widespread in UK and Europe. Increasing in USA.	More infectious; more severe infection	No
B.1.351	South Africa	Detected in 40 countries. Widespread in South Africa.	More infectious; less responsive to current vaccines	No
P.1	Brazil	Detected in 17 countries. Not yet widespread.	More infectious; possibly less responsive to current vaccines	No
P.2	Brazil	Widespread in Brazil	No data to suggest concern yet, but monitoring is warranted	Yes
B.1.526	New York	Widespread in New York. Increasing in USA.		Yes
B.1.427/ B.1.429	California	Widespread in California. Increasing in USA.		Yes

COVID-19 Vaccinations

St. Maarten is in the third week of the vaccination campaign where persons are starting to receive their second dose of the Pfizer vaccine. The vaccinations were rolled out health care workers, persons over age 60 years and persons between the ages of 18-59 with underlying medical conditions.

Vaccination registration was launched in mid-February with a gradual uptake in the first three weeks. As of March 15, a total of 8,595 adults registered to receive the vaccine. This number needs to increase and there are several outreach initiatives planned by the Vaccine Management Team (VMT) and other departments within Ministry VSA.

The Belair Vaccination Administration Location (VAL) was launched on March 9 and it was decided that the Community Help Desks in Dutch Quarter and Cole Bay will serve as information and registration hubs. As the roll out continues, the VMT will assess the need for additional vaccination locations to serve the public.