



# COVID-19 crisis

## The ECDC Methodology

An EU methodology for estimating needs and allocating scarce resources under rescEU and JPA

5.1.2

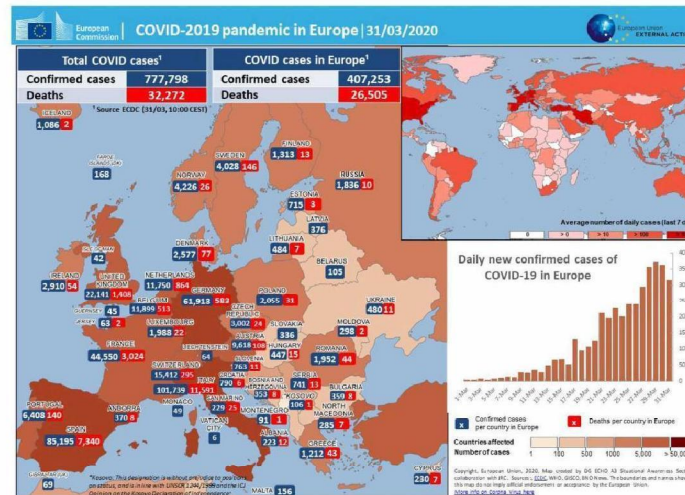
5.1.2e

5.1.2e

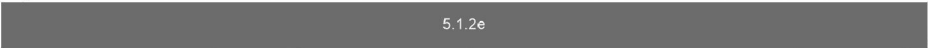
5.1.2e

# How the Commission is responding for medical countermeasure needs

- Medical Stockpiling Implementing Act to acquire medical assets through rescEU
- Accelerated Joint Procurements for medical countermeasures
- The medical countermeasure items under these mechanisms are in high demand with challenges to supply (timings and quantities)



## The need for a methodology

- Developed by the European Centre for Disease Prevention and Control (ECDC) together with  5.1.2e with support from the Joint Research Centre
- For when demand exceeds supply: what should go where
- Common, homogeneous approach to identify needs in a comparative manner
- Based on quantitative epidemiological data, resource needs, national deficits & the principle of proportionality

## Joint approaches, shared benefits

- An enabling mechanism for intra-European solidarity and pan-European distribution and sharing of capacities to a common crisis

## Informed decision-making - rescEU

- Will enable the Commission to make informed decisions based on a common framework
- For rescEU, final decision will be made in the context of Commission Implementing Decision (EU) 2019/1310, art 3.3. The methodology is developed observing such criteria, and is part of the Commission's decision-making process

# Informed decision-making – Joint Procurement

- Will provide countries guidance to ensure homogeneity in updating their needs to the Commission
- Will provide countries guidance on how to approach the different company contracts of the joint procurements to ensure that what is needed the most, goes to where it is needed the most
- Demonstrates that the EU works together