



SARS-CoV-2 (COVID-19) –2020

Stockholm, 10 March 2020

Distribution of COVID-19 cases in accordance with the applied case definitions in the affected countries by country, Africa, as of 10 March 2020



9 March

Places reporting cases	Confirmed cases	Deaths
Africa	83	1
Egypt	49	1
Algeria	20	0
Senegal	4	0
South Africa	3	0
Cameroon	2	0
Morocco	2	0
Togo	1	0
Nigeria	1	0
Tunisia	1	0
Asia	96124	3380
Europe	11998	399
America	700	22
Oceania	85	3
Other	705	6
Total	109695	3811

10 March

Places reporting cases	Confirmed cases	Deaths
Africa	95	1
Egypt	55	1
Algeria	20	0
South Africa	7	0
Senegal	4	0
Nigeria	2	0
Cameroon	2	0
Morocco	2	0
Tunisia	2	0
Togo	1	0
Asia	97035	3448
Europe	15381	536
America	931	28
Oceania	105	3
Other	696	7
Total	114243	4023

Distribution of COVID-19 cases in accordance with the applied case definitions in the affected countries by country, Asia, as of 10 March 2020



9 March

Places reporting cases	Confirmed cases	Deaths
Africa	83	1
Asia	96124	3380
China	80859	3122
South Korea	7382	51
Iran	6566	194
Japan	488	7
Singapore	150	0
Malaysia	99	0
Bahrain	79	0
Kuwait	64	0
Iraq	62	4
Thailand	50	1
United Arab Emirates	45	0
Taiwan	45	1
Israel	39	0
India	34	0
Lebanon	32	0
Vietnam	30	0
Palestine	19	0
Oman	16	0
Qatar	15	0
Saudi Arabia	11	0
Philippines	10	0
Indonesia	6	0
Pakistan	6	0
Afghanistan	4	0
Maldives	4	0
Bangladesh	3	0
Cambodia	2	0
Bhutan	1	0
Jordan	1	0
Nepal	1	0
Sri Lanka	1	0
Europe	11998	399
America	700	22
Oceania	85	3
Other	705	6
Cases on an international conveyance Japan	705	6
Total	109695	3811

10 March

Places reporting cases	Confirmed cases	Deaths
Africa	95	1
Asia	97035	3448
China	80879	3139
South Korea	7513	54
Iran	7161	237
Japan	514	9
Singapore	160	0
Malaysia	117	0
Bahrain	109	0
Kuwait	65	0
Iraq	61	6
United Arab Emirates	59	0
Thailand	50	1
Taiwan	45	1
India	44	0
Lebanon	41	0
Israel	39	0
Philippines	35	1
Vietnam	31	0
Palestine	20	0
Qatar	18	0
Oman	18	0
Pakistan	16	0
Saudi Arabia	15	0
Indonesia	6	0
Maldives	4	0
Afghanistan	4	0
Bangladesh	3	0
Cambodia	2	0
Sri Lanka	1	0
Jordan	1	0
Mongolia	1	0
Brunei Darussalam	1	0
Nepal	1	0
Bhutan	1	0
Europe	15381	536
America	931	28
Oceania	105	3
Other	696	7
Total	114243	4023

Distribution of COVID-19 cases in accordance with the applied case definitions in the affected countries by country, Europe, as of 10 March 2020



9 March

Places reporting cases	Confirmed cases	Deaths
Africa	89	1
Asia	96124	3390
Europe	11998	399
Italy	7375	366
France	1126	19
Germany	562	0
Spain	589	5
Switzerland	332	2
United Kingdom	273	3
Netherlands	265	3
Sweden	262	0
Belgium	200	0
Norway	169	0
Austria	102	0
Greece	73	0
Iceland	85	0
Denmark	38	0
San Marino	37	1
Czech Republic	32	0
Portugal	30	0
Finland	30	0
Ireland	21	0
Slovenia	18	0
Romania	15	0
Georgia	13	0
Croatia	12	0
Poland	11	0
Estonia	10	0
Russia	10	0
Azerbaijan	9	0
Hungary	8	0
Belarus	6	0
Slovakia	5	0
Luxembourg	5	0
Bulgaria	4	0
Malta	3	0
North Macedonia	3	0
Latvia	3	0
Albania	2	0
Bosnia and Herzegovina	2	0
Moldova	1	0
Ukraine	1	0
HOLY SEE VATICAN CITY STATE	1	0
Andorra	1	0
Armenia	1	0
Moldova	1	0
Liechtenstein	1	0
Serbia	1	0
Lithuania	1	0
America	700	22
Oceania	85	3
Other	705	6
Total	109625	3811

10 March

Places reporting cases	Confirmed cases	Deaths
Africa	95	1
Asia	97045	3448
Europe	15381	536
Italy	9172	464
France	1412	30
Spain	1204	28
Germany	1139	2
Switzerland	374	2
United Kingdom	321	5
Netherlands	321	3
Sweden	248	0
Belgium	239	0
Norway	192	0
Austria	131	0
Denmark	113	0
Greece	84	0
Iceland	65	0
San Marino	49	2
Finland	40	0
Czech Republic	40	0
Portugal	39	0
Ireland	21	0
Russia	20	0
Poland	17	0
Romania	17	0
Slovenia	16	0
Georgia	15	0
Croatia	12	0
Estonia	10	0
Azerbaijan	9	0
Hungary	9	0
Albania	6	0
Latvia	6	0
Belarus	6	0
Slovakia	5	0
Luxembourg	5	0
Malta	4	0
Bulgaria	4	0
North Macedonia	3	0
Bosnia and Herzegovina	2	0
Cyprus	2	0
Ukraine	1	0
Moldova	1	0
Monaco	1	0
Serbia	1	0
Holy See	1	0
Andorra	1	0
Liechtenstein	1	0
Lithuania	1	0
Armenia	1	0
America	931	28
Oceania	105	3
Other	696	2
Total	114243	4023

Distribution of laboratory-confirmed cases of COVID-19 by country in EU/EEA, and the UK as of 10 March 2020



9 March

EU/EEA, and the UK	Cases	Deaths
Finland	30	0
France	1126	19
Germany	902	0
Italy	7375	366
United_Kingdom	273	3
Spain	589	5
Sweden	203	0
Belgium	200	0
Croatia	12	0
Austria	102	0
Greece	73	0
Norway	169	0
Denmark	38	0
Romania	15	0
Estonia	10	0
Netherlands	265	3
Lithuania	1	0
Iceland	55	0
Ireland	21	0
Luxembourg	5	0
Czech_Republic	32	0
Latvia	3	0
Portugal	30	0
Poland	11	0
Liechtenstein	1	0
Hungary	8	0
Slovenia	16	0
Slovakia	5	0
Bulgaria	4	0
Malta	3	0
Total number of cases	11577	396

10 March

EU/EEA, and the UK	Cases	Deaths
Finland	40	0
France	1412	30
Germany	1139	2
Italy	9172	464
Spain	1204	28
Sweden	248	0
Belgium	239	0
Croatia	12	0
Austria	131	0
Greece	84	0
Norway	192	0
Denmark	113	0
Romania	17	0
Estonia	10	0
Netherlands	321	3
Lithuania	1	0
Iceland	65	0
Ireland	21	0
Luxembourg	5	0
Czech_Republic	40	0
Latvia	6	0
Portugal	39	0
Poland	17	0
Liechtenstein	1	0
Hungary	9	0
Slovenia	16	0
Slovakia	5	0
Bulgaria	4	0
Malta	4	0
Cyprus	2	0
Total number of cases	14569	527

Distribution of COVID-19 cases in accordance with the applied case definitions in the affected countries by country, America and Oceania, as of 10 March 2020



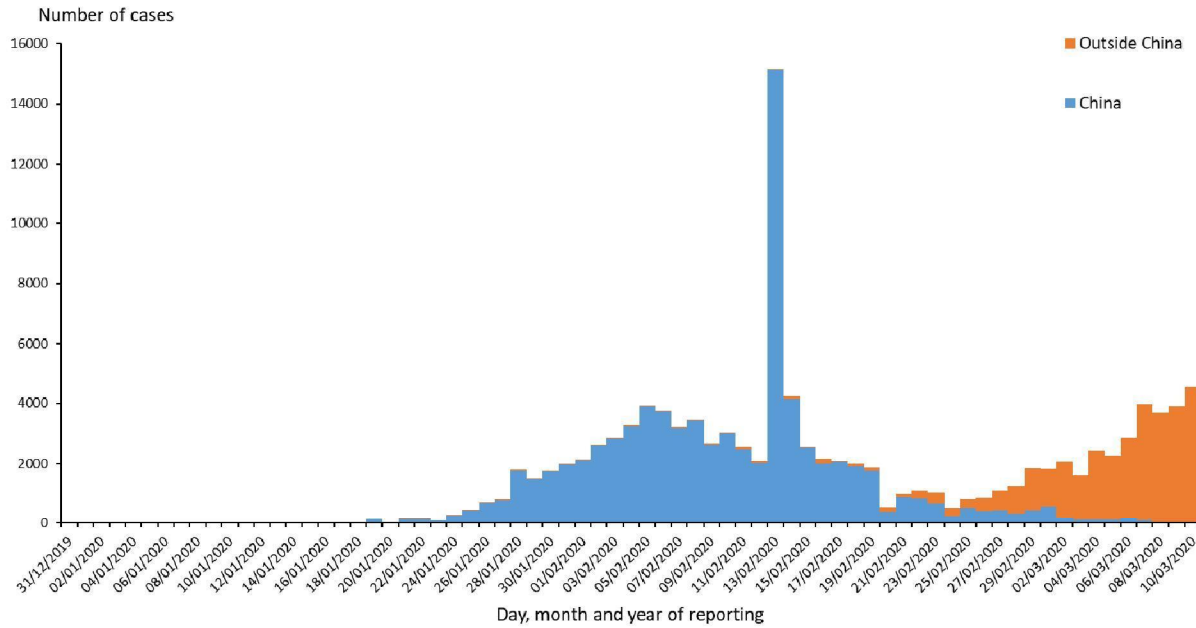
9 March

Places reporting cases	Confirmed cases	Deaths
Africa	83	1
Asia	96124	3380
Europe	11998	399
America	700	22
United States of America	554	21
Canada	62	0
Brazil	25	0
Ecuador	14	0
Argentina	12	1
Chile	10	0
Peru	7	0
Mexico	7	0
Costa Rica	5	0
Dominican Republic	2	0
Paraguay	1	0
Colombia	1	0
Oceania	85	3
Australia	80	3
New Zealand	5	0
Other	705	6
Total	109695	3811

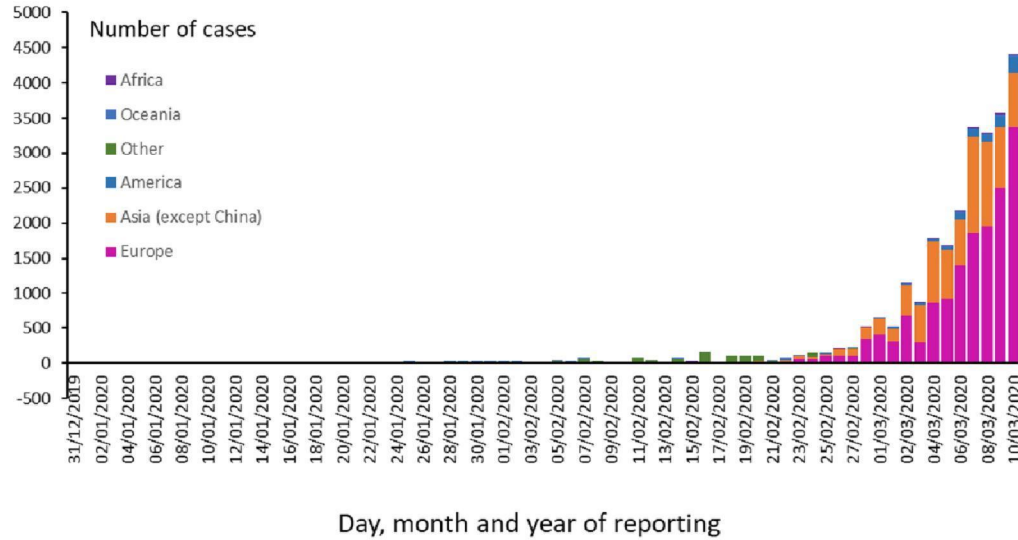
10 March

Places reporting cases	Confirmed cases	Deaths
Africa	95	1
Asia	97035	3448
Europe	15381	536
America	931	28
United States of America	754	26
Canada	77	1
Brazil	25	0
Ecuador	15	0
Chile	13	0
Argentina	12	1
Costa Rica	9	0
Peru	9	0
Mexico	7	0
Dominican Republic	5	0
Colombia	3	0
Panama	1	0
Paraguay	1	0
Oceania	105	3
Australia	100	3
New Zealand	5	0
Other	696	7
Total	114243	4023

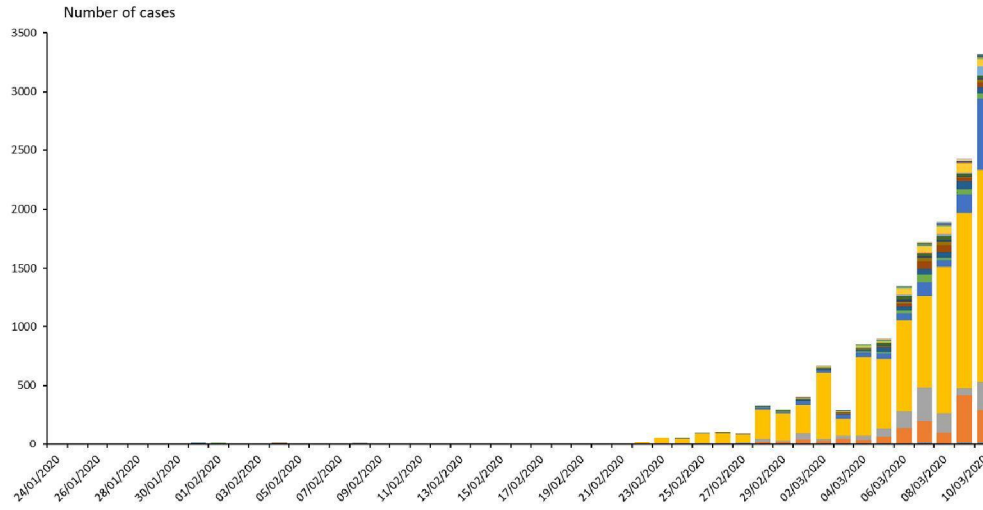
Distribution of COVID-19 cases in accordance with the applied case definitions in the affected countries, as of 10 March 2020



Distribution of COVID-19 cases in accordance with the applied case definitions in the affected countries by continent, outside China Mainland, as of 10 March 2020



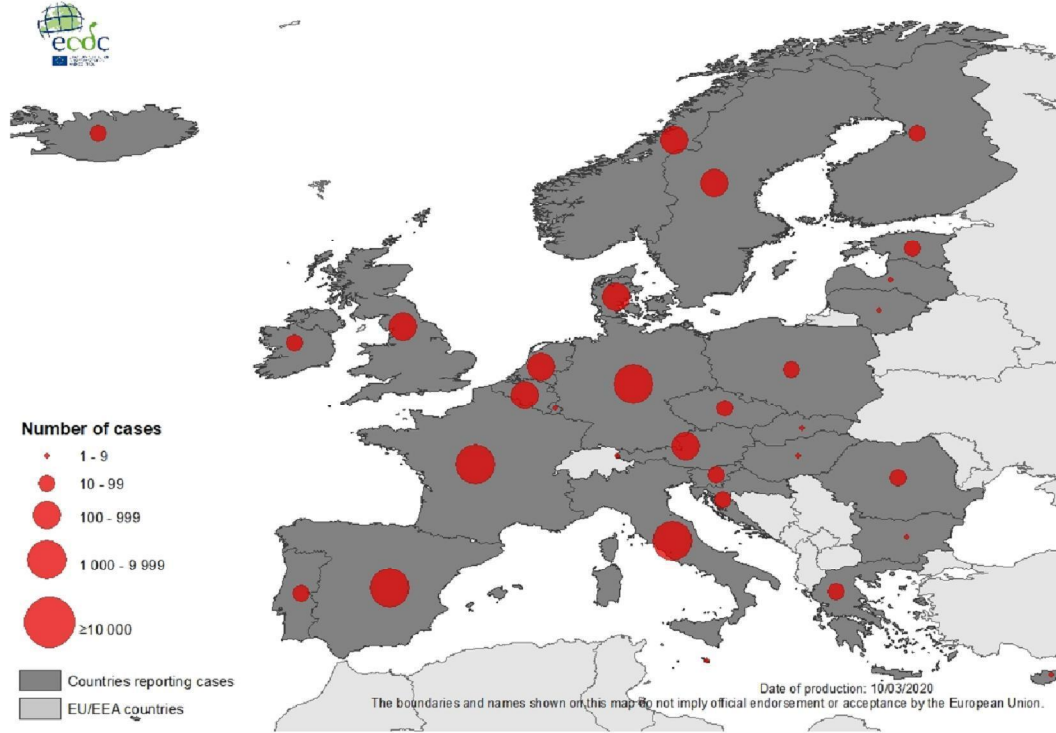
Distribution of laboratory-confirmed cases of COVID-19 in EU/EEA and the UK as of 10 March 2020



Day, month and year of reporting

- Finland
- France
- Germany
- Italy
- Spain
- Sweden
- United_Kingdom
- Belgium
- Croatia
- Austria
- Greece
- Norway
- Denmark
- Romania
- Estonia
- Netherlands
- Lithuania
- Iceland
- Ireland
- Luxembourg
- Czech_Republic
- Latvia
- Portugal
- Poland
- Liechtenstein
- Hungary
- Slovenia
- Slovakia
- Bulgaria
- Malta
- Cyprus

Geographical distribution of laboratory-confirmed cases of COVID-19 in the EU/EEA and the UK, as of 10 March 2020



Geographical distribution of COVID-19 cases in accordance with the applied case definitions in the affected countries worldwide, as of 10 March 2020

