

DIRECT IMPLICATION OF COVID-19



ESMO > COVID-19 and Cancer > Collaborating on registries, studies and surveys

ESMO-COCARE REGISTRY

ESMO-CoCARE

International Collaborative Registry



The COVID-19 & Cancer Consortium

- HOME
- COLLABORATORS
- PUBLICATIONS
- FAQS
- OTHER EFFORTS
- DATA
- CURRENT EVIDENCE
- RESOURCES

The COVID-19 and Cancer Consortium

Please click the button below to report on a patient with cancer and COVID-19. See below for eligibility.

[ACCESS THE SURVEY](#)

Cookie Policy

This website uses cookies. By continuing to use this site, you accept our use of cookies.

[ACCEPT & CLOSE](#)



Dutch Oncology COVID-19 Consortium

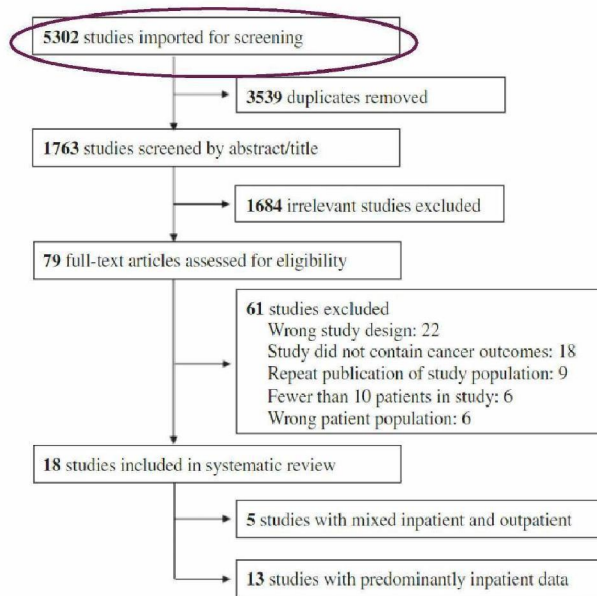


Figure 1. Preferred Reporting Items for Systematic Reviews and Meta-Analyses study inclusion and exclusion are illustrated.

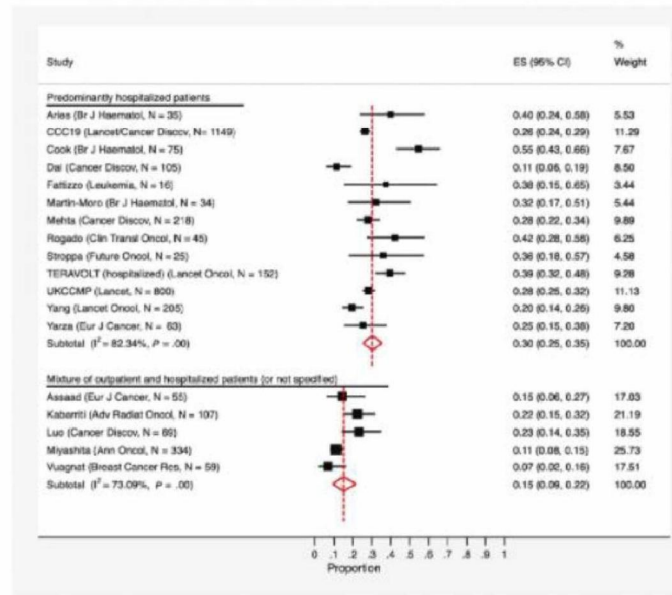


Figure 3. A meta-analysis of overall mortality among patients with cancer and coronavirus disease 2019 (COVID-19) (all studies) is illustrated. CCC19 indicates COVID-19 and Cancer Consortium (Kuderer et al¹⁴ and Rivera et al¹⁵); ES, effect size; TERAVOLT, Thoracic Cancers International COVID-19 Collaboration (Garassino et al¹⁶); UKCCMP, UK Coronavirus Cancer Monitoring Project (Lee et al¹⁷). Names on the left are lead author names from the remaining studies that were included in the meta-analysis.^{24-27,29-32,34-40}

Deisai, Cancer 30 Dec 2020

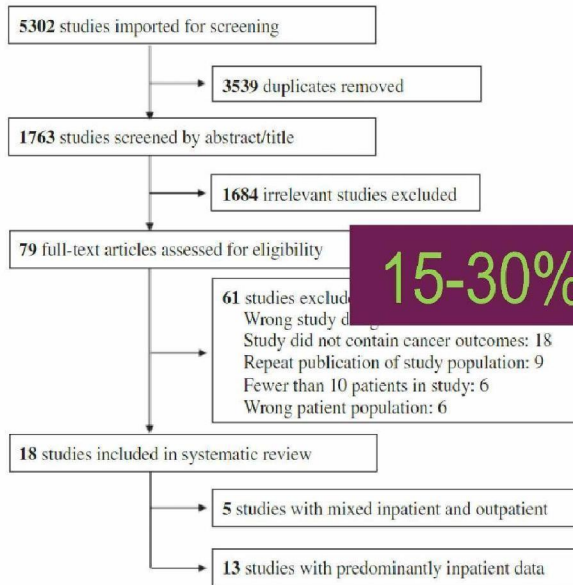


Figure 1. Preferred Reporting Items for Systematic Reviews and Meta-Analyses study inclusion and exclusion are illustrated.

15-30% COVID MORTALITY

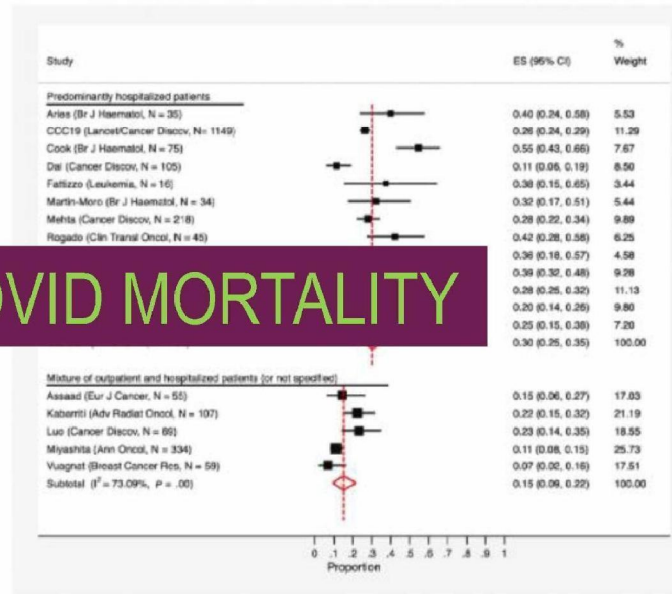


Figure 3. A meta-analysis of overall mortality among patients with cancer and coronavirus disease 2019 (COVID-19) (all studies) is illustrated. CCC19 indicates COVID-19 and Cancer Consortium (Kuderer et al¹⁴ and Rivera et al¹⁵); ES, effect size; TERAVOLT, Thoracic Cancers International COVID-19 Collaboration (Garassino et al¹⁶); UKCCMP, UK Coronavirus Cancer Monitoring Project (Lee et al¹⁷). Names on the left are lead author names from the remaining studies that were included in the meta-analysis.^{24-27,29-32,34-40}

DIRECT IMPLICATION OF COVID-19

The image shows a screenshot of the ESMO-COCARE Registry website. A large purple rectangular overlay is centered on the page, containing the text "INCREASED RISK OF DEATH" in a light green, sans-serif font. The background of the screenshot includes the ESMO logo (with the tagline "GOOD SCIENCE BETTER MEDICINE BEST PRACTICE"), the text "ESMO > COVID-19 and Cancer > Collaborative Registry", and "ESMO-COCARE REGISTRY". Below this, there is a section titled "ESMO-CoCARE International Collaborative Registry" with a blue wireframe graphic. To the right, there is a "COVID-19 and Cancer Consortium" banner with a "ACCESS THE SURVEY" button. A "Cookie Policy" notification is also visible at the bottom right of the screenshot, with an "ACCEPT & CLOSE" button.



◆ Dutch Oncology COVID-19 Consortium (DOCC)



Methods

- . National quality of care registry: open since March 27th, 2020

- . Main inclusion criteria:
 - patients with cancer and COVID-19
 - cancer diagnosis or cancer treatment \leq 5 years
 - SARS-CoV-2 infection: positive RT-PCR test and/or radiological findings on CT

- . Data were cleaned prior to analyses

- ◆ **Multivariable analysis**

- ◆ **Patients' characteristics related to fatal outcome of COVID-19**

	Odds ratio (95% CI)	<i>p</i> -value
<i>Sex (male)</i>	1.84 (1.04-3.23)	0.035
<i>Age (years)</i>		
<65	-----	-----
≥65 - <75	4.26 (1.89-9.58)	<0.001
≥75	5.75 (2.56-12.92)	<0.001
<i>Comorbidities</i>		
Prior/other malignancy	2.02 (1.02-4.02)	0.045
<i>Cancer type</i>		
Other	-----	-----
Haematological malignancy	1.89 (1.01-3.53)	0.046
Lung cancer	3.40 (1.51-7.64)	0.003

◆ Conclusions

- ◆ In this nationwide study, risk factors of a worse outcome of COVID-19 in patients with cancer have been identified:
 - baseline characteristics: male, age ≥ 65 years, prior or other malignancy
 - cancer specific characteristics: haematological malignancy or lung cancer

- ◆ The results of the current study are representative for a general population of patients with cancer, because of:
 - equal access to medical care
 - national guidelines regarding cancer treatment



COVID-19 AND CANCER ^

COVID-19 vaccination

Q&A on COVID-19

Collaborating on registries, studies and surveys v

COVID-19 and cancer care in the ESMO journals

COVID-19 Full Coverage v

Supporting oncology professionals

ABOUT ESMO v

MEMBERSHIP v

ESMO > COVID-19 and Cancer

ESMO STATEMENTS FOR VACCINATION AGAINST COVID-19 IN PATIENTS WITH CANCER

COVID-19 vaccination in cancer patients: ESMO statements

ESMO has released ten statements to address issues and concerns on immunising patients with cancer against COVID-19.

By reviewing the current knowledge available, a group of 16 ESMO representatives authored and reviewed answers to key questions on the efficacy and safety of vaccines targeting the Severe acute respiratory syndrome coronavirus 2 (SARS-CoV-2).

What are the vaccines being developed and nearing approval? v

What is the incidence and severity of COVID-19 in patients with cancer, and where should they be positioned in vaccination priority policies? v

What is the ability of cancer patients to mount an immune response following vaccination? v

Contributors

Marina Chiara Garassino¹, Nicola Giesen², Petros Grivas³, Karin Jordan², Francesca Lucibello⁴, Olivier Mir⁵, George Pentheroudakis⁶, Florian Scotté⁷, Marie von Lilienfeld-Toal^{8,9}, Giuseppe Curigliano¹⁰, John Haanen¹¹, Uwe Gerd Liebert¹², Florian Lordick¹³, Ignacio Melero^{14,5,16}, Corinna Pietsch¹⁷ and Solange Peters¹⁸

1. Thoracic Oncology Unit, Medical Oncology

AACR



CANCER DISCOVERY

Home About Articles For Authors Alerts News COVID-19 Search Q

Science in Society

Priority COVID-19 Vaccination for Patients with Cancer while Vaccine Supply Is Limited

Antoni Ribas, Rajarshi Sengupta, Trewan Locke, Sayyed Kaleem Zaidi, Katie M. Campbell, John M. Carethers, Elizabeth M. Jaffee, E. John Wherry, Jean-Charles Soria, and Gypsyamber D'Souza; for the AACR COVID-19 and Cancer Task Force

DOI: 10.1158/2159-8290.CD-20-1817 [Check for updates](#)

Article Figures & Data Info & Metrics PDF

This OnlineFirst version was published on January 4, 2021
doi: 10.1158/2159-8290.CD-20-1817

Abstract

Summary: Published series on COVID-19 support the notion that patients with cancer are a particularly vulnerable population. There is a confluence of risk factors between cancer and COVID-

Request Permissions
Open full page PDF
Share
Tweet

ASCO

ASCO AMERICAN SOCIETY OF CLINICAL ONCOLOGY
ASSOCIATION OF HEMATOLOGICAL ONCOLOGISTS

Membership Directory Store Press Center Other Sites [Join Now](#) Sign In

Practice & Policy Research & Guidelines Training & Education International Programs Advocacy Meetings Membership About ASCO

ASCO in Action

ASCO Advocates for Priority Status for Cancer Patients in COVID-19 Vaccine Distribution Plans; Provides Information on Safety and Efficacy of Vaccinations

December 23, 2020



Related ASCO in Action

Extend Key Regulatory Flexibilities and Leverage New Technologies During Pandemic and Beyond
January 6, 2021