



Recovery and Resilience Facility

Support for healthcare-related investments and reforms in the context of Recovery and Resilience Plans

EU NITAG COLLABORATION WEBINAR THURSDAY 18 Feb

5.1.2e 5.1.2e 5.1.2e 5.1.2e 5.1.2e

5.1.2e

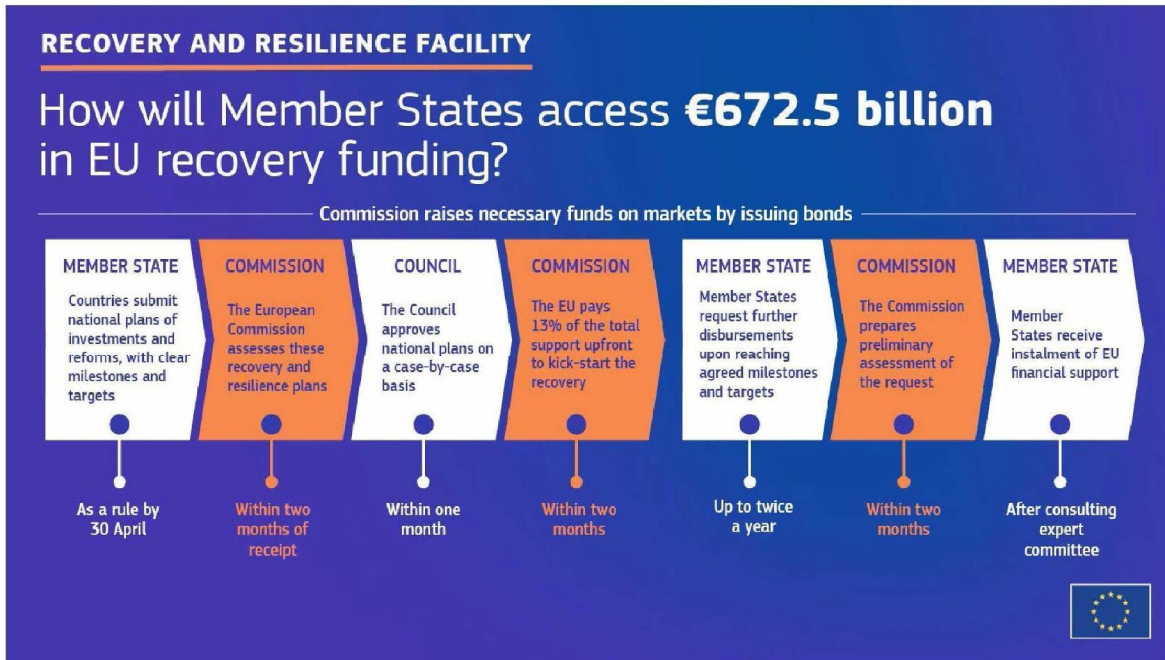
5.1.2e

Recovery and Resilience Facility (RRF)

- The Commission proposed the RRF in May 2020 as the centrepiece of the Next Generation EU recovery instrument.
- (Expected) entry-into-force: 19 Feb 2021



Timelines



Post-COVID-19 challenges for health systems

BUDGET

Insufficient financing for health investments;

Additional strain on health system's revenues.

WORKFORCE

Shortages of health workers;

Skills mismatch.

CARE ORGANISATION

Limited coordination and integration of care;

Potential for more e-health and telemedicine;

Weak primary and ambulatory care.

CRISIS RESPONSE

Supply chains for critical equipment and medicine;

Lack of infrastructure.

ACCESS

Obstacles in access to healthcare due to emergency;

Obstacles for vulnerable groups.

National Recovery and Resilience Plans (RRPs)

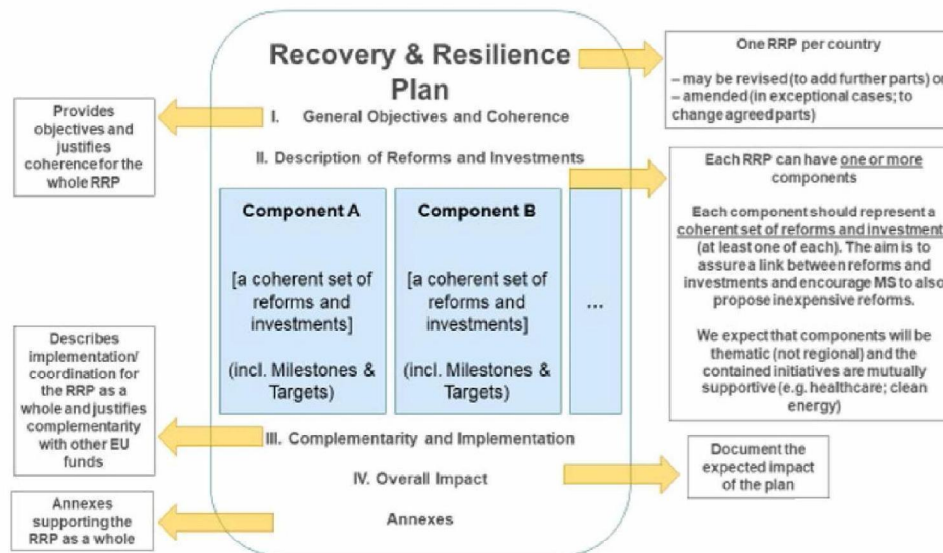
- The Proposal on **Recovery and Resilience Facility** outlines the information MSs need to provide in their **Recovery and Resilience Plans**
- RRP provide an overview of reforms and investments in line with the objectives of the RRF and Country Specific Recommendations (esp. 2019 and 2020) and EU flagships
- Focus on
 - Promoting economic, social and territorial cohesion (can be relevant for food systems)
 - Strengthening economic & social resilience
 - Mitigating the socio-economic impact of the crisis
 - Supporting the green & digital transitions (can be relevant for food systems)

Each RRP to include

- min 37% of climate related expenditure
- min 20% of expenditure related to digital (including e-health)

Guidance to MSs for preparing Recovery and Resilience Plans

- **Detailed guidance** on how best to present the RRP together with a standard template **easily reachable** from the Commission website [ec.europa.eu](https://ec.europa.eu/info/departments/recovery-and-resilience-task-force_en#Documents):
 - https://ec.europa.eu/info/departments/recovery-and-resilience-task-force_en#Documents



- Member States may submit their RRP at the latest by **30 April 2021**
- They may also wish to send a draft plan as from **15 October 2020**

Guidance to MSs for preparing Recovery and Resilience Plans



Commission staff working document - Guidance to Member States Recovery and Resilience Plans - Part 1

22 January 2021
English (883.3 KB - PDF)

Download

- « As a rule, the Recovery and Resilience Facility should only finance **costs that are non-recurrent** in nature and fall within the time horizon of the Recovery and Resilience Plan.”
- “e-government, digital public services and local digital ecosystems: [...] delivering services of public interest notably **e-health**”
- ”Both in preparatory work and implementation, **consultations** should be conducted in accordance with the national legal framework and involve as relevant local and regional authorities, social partners, civil society organisations, youth organisations and other **relevant stakeholders**”

Support for Member States

- Commission created **website with FAQ** to help Member States with the new situation:

5.1.2a

- The website is frequently updated to address possible uncertainties. It is accessible by Member States only **via their contact points**
- Health Ministries are invited to liaise with their Member State's contact point during the RRP preparation.
- **For general information see the RRF website of the Commission:**

https://ec.europa.eu/info/business-economy-euro/recovery-coronavirus/recovery-and-resilience-facility_en

Thank you

© European Union 2020

Unless otherwise noted the reuse of this presentation is authorised under the [CC BY 4.0](https://creativecommons.org/licenses/by/4.0/) license. For any use or reproduction of elements that are not owned by the EU, permission may need to be sought directly from the respective right holders.

