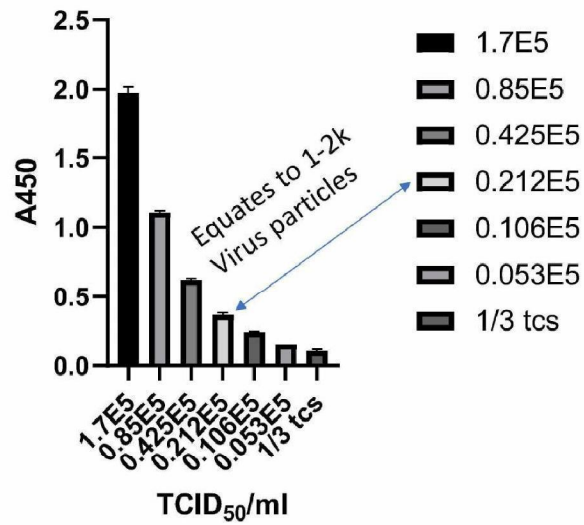


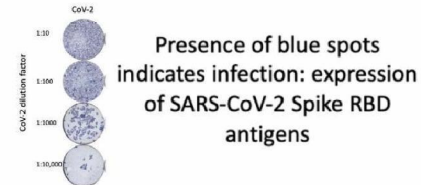
# Sensitivity

## ace2 capture-virus-S309Xav detection



- Infected/infectious usually determined by viral load ~ Ct qRT-PCR (<30)

- Best evidence comes from viral culture



- Coated 10ug/ml ACE2-M on ELISA plates (100ul per well)
- Add virus at different dilutions in PBS (1/3, 1/6, 1/12, 1/24, 1/48 and 1/96)
- Add tissue culture supernatant (2%FCS + DMEM) diluted 1/3 in PBS as neg control
- Add 100ul neat S309 XavTrap (A280: 5.0) to wells
- Add 100ul HRP myc (detect myc on Xavtrap S309)
- Add TMB, blue colour, then stop with 1M sulphuric acid