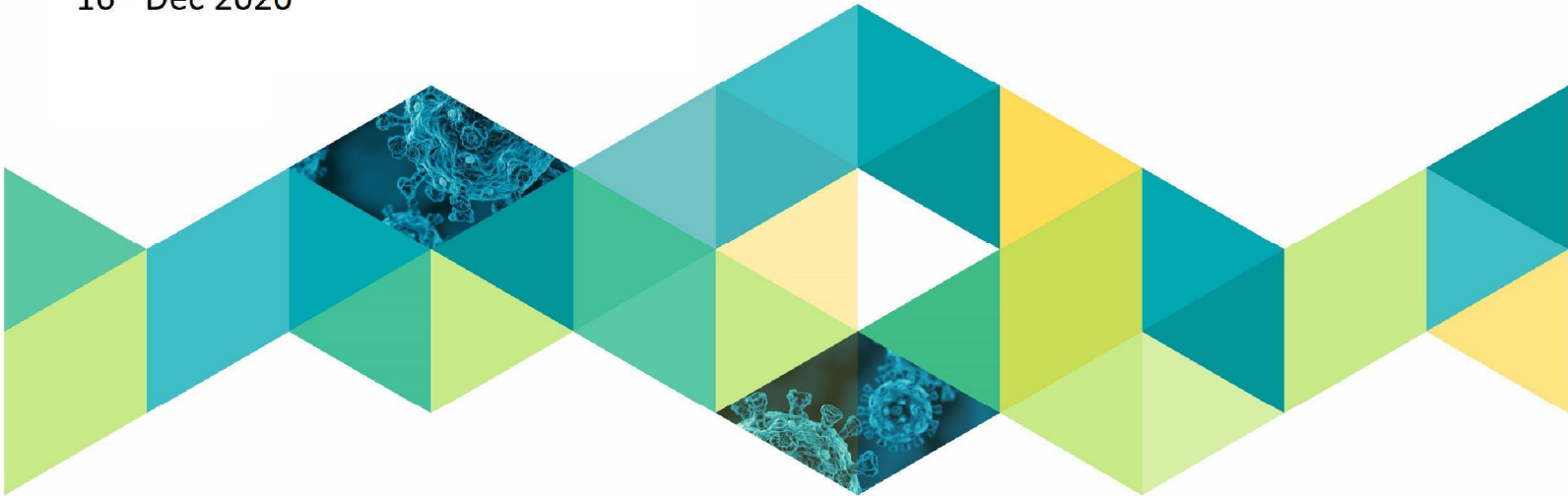


EU dose allocation and timelines to delivery

16th Dec 2020



STRICTLY CONFIDENTIAL. The slides and information discussed during the presentation constitutes confidential information and business secrets of Pfizer and BioNTech and shall not be disclosed to third parties.



EU Weekly Allocation Phasing Scenarios

	Dec 2020	Jan 2021	Jan 2021	Jan 2021	Jan 2021	Feb 2021	Feb 2021	Feb 2021	Feb 2021	Mar 2021	Mar 2021	Mar 2021	Mar 2021	Mar 2021		
<i>Millions Doses</i>	<i>Wk 53</i>	<i>Wk 1</i>	<i>Wk 2</i>	<i>Wk 3</i>	<i>Wk 4</i>	<i>Wk 5</i>	<i>Wk 6</i>	<i>Wk 7</i>	<i>Wk 8</i>	<i>Wk 9</i>	<i>Wk 10</i>	<i>Wk 11</i>	<i>Wk 12</i>	<i>Wk13</i>	<i>Total Dec-Mar</i>	<i>Notes</i>
• Original EU allocation per month – no supply phasing	5.1.1c															
• Scenario 1: Steady supply per week, supports 2nd doses compliance,																
• Scenario 2: EU Request on Dec 16 th for enhanced phasing in Jan 2021																

Scenario 1 is recommended.

- Based on recent US launch experience a smooth flow is desirable to minimise risks with points of use readiness & to support 2nd dose compliance



Projected Timelines post CHMP approval
 (supports first shipment to all markets with a coordinated arrival on Dec 26th)

Step	Activity	Process Owner	Duration
1	CHMP opinion	EMA	5.1.1c
2	Commission Decision notification, publication and EPAR	EMA	
3A	PEI certificate received	PEI	
3B	Waiver on MIF forms TBC	Mkt States	
3C	QP Batch release	Puurs & BNT Quality	
4	Start Pick, Pack & Ship for coordinated first shipments	Puurs: Limited first delivery 2 boxes to 1no. address in each markets	
	Continue Pick, Pack & Ship roll out of remaining Wk 53 allocation	Prioritisation based on orders & readiness	
	Doses in transit	Pfizer Transportation & Logistics	
5	Coordinated first delivery at selected 1 no. PoU per market	Mkt need to confirm readiness to receive on 26 th	
6	Continue Pick, Pack & Ship roll out of remaining Wk 53 allocation	Prioritisation based on orders & readiness	

Key Enablers

1. Expedited EC decision notification (target : 9am on 22nd)
2. Expedited OMCL Approval Certificates from PEI on 22nd
3. **Critical for waiver for Market Information Forms (MIFs)**
4. Confirmed "ship to" addresses & purchase orders in the system
5. Confirmation that "ship to " addresses are ready to receive doses

Notes :

1. Timeline reflects EC request for a coordinated first shipment to arrive on same day to support a consistent vaccination start date across all market states
2. [Redacted]
3. 5.1.1c
4. [Redacted]