

UN Research Roadmap for the COVID-19 Recovery

Building back better after COVID-19

Steven J. Hoffman JD PhD LLD
Scientific Director, Institute of Population & Public Health
Canadian Institutes of Health Research

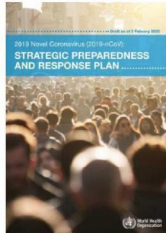
July 27 & 28, 2020
UN Research Roadmap Steering Groups





Response Efforts

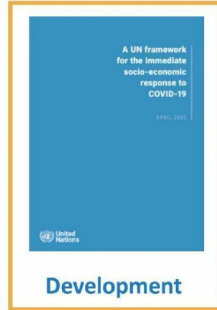
Three key parts to the United Nations' comprehensive response to COVID-19



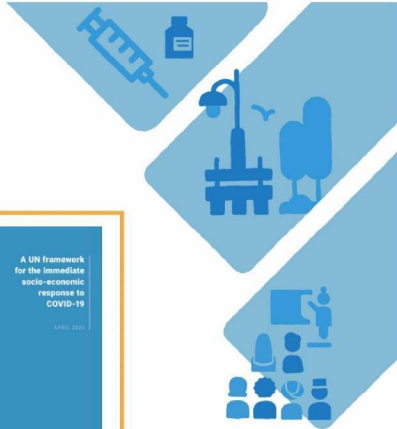
Health



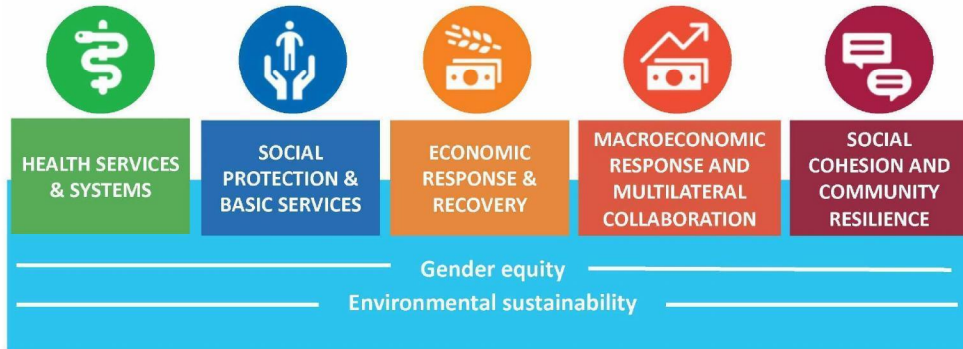
Humanitarian



Development



A UN framework for the socio-economic recovery from COVID-19



Integrating key elements



Sustainable Development Goals



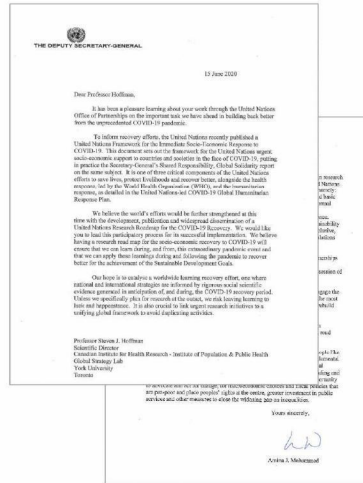
Gender equity



Environmental sustainability

Mandate from the UN Deputy Secretary-General

“Our hope is to catalyse a worldwide learning recovery effort, one where national and international strategies are informed by rigorous social scientific evidence generated in anticipation of, and during, the COVID-19 recovery period.”



Roadmap objectives

**Transform the UN
framework into a
“rapid learning
initiative”**

1. Ensure the COVID-19 recovery is informed by the best available research
2. Use learnings from early response efforts and apply them to later recovery efforts
3. Bring renewed focus to systemic issues highlighted by COVID-19 and the marginalized populations most affected
4. Enable international scientific collaboration through a unifying global framework

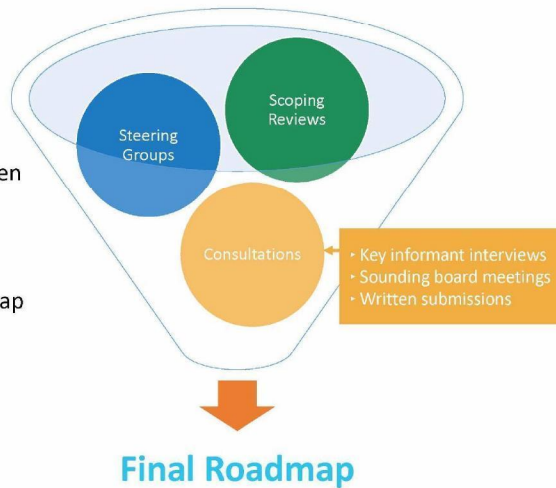
A rare opportunity

1. Bring attention to the critical role for research in informing COVID-19 recovery efforts
2. Support the world's recovery effort
3. Visibly demonstrate scientific leadership and the important role in stewarding global science
4. Align the pandemic response efforts of international research funders and build new global partnerships

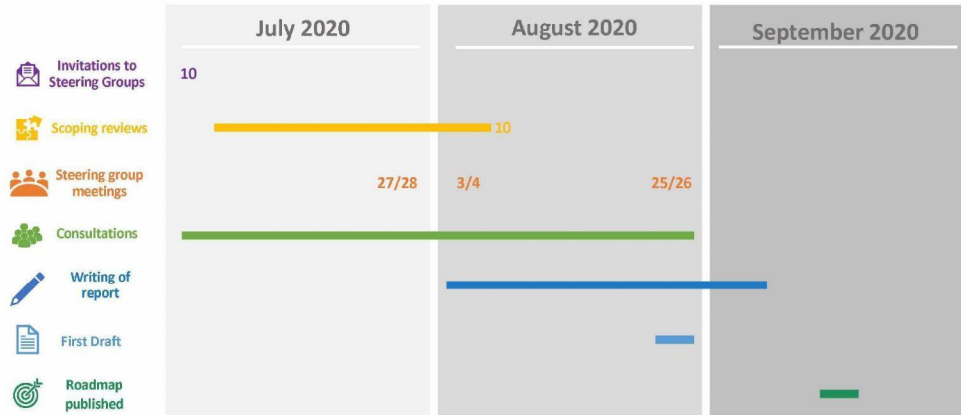


Our roadmap to the Roadmap

- Three separate processes undertaken in parallel
- The information collected through each process will inform the final content of the UN Research Roadmap for the COVID-19 Recovery



Creation of the Roadmap





Steering Groups

Membership list

Health Services		Social Protection	
(10)(2e)	(10)(2e)	(10)(2e)	Wellcome Trust
(10)(2e)	(10)(2e)	(10)(2e)	European Research Council
(10)(2e)	(10)(2e)	(10)(2e)	South African MRC
(10)(2e)		(10)(2e)	Indian Council of Social Sciences Research
(10)(2e)		(10)(2e)	African Academy of Sciences
(10)(2e)		(10)(2e)	INSERM (France)
(10)(2e)		(10)(2e)	Bill & Melinda Gates Foundation
(10)(2e)		(10)(2e)	Health Systems Research Institute Thailand
(10)(2e)		(10)(2e)	Health Foundation
(10)(2e)		(10)(2e)	Indian Council of Medical Research
(10)(2e)		(10)(2e)	São Paulo Research Foundation (FAPESP)
(10)(2e)		(10)(2e)	National Health and Medical Research Council of Australia
(10)(2e)		(10)(2e)	Grand Challenges Canada
(10)(2e)			National Institute of Health Carlos III (Spain)

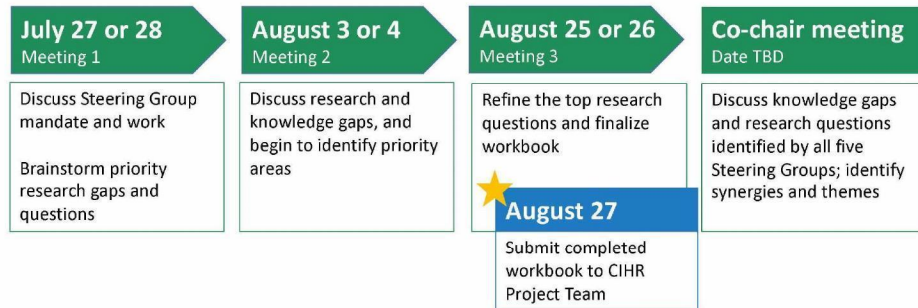
Membership list

Economic Recovery	
(10)(2e)	Social Sciences and Humanities Research Council (SSHRC)
(10)(2e)	
(10)(2e)	FIOCRUZ (Brazil)
(10)(2e)	
(10)(2e)	Agence Nationale de la Recherche (ANR) (France)
(10)(2e)	
(10)(2e)	Consejo Nacional de Ciencia y Tecnología (CONACYT) (Mexico)
(10)(2e)	
(10)(2e)	Deutsche Forschungsgemeinschaft (DFG) (Germany)
(10)(2e)	
(10)(2e)	Secretariat of Government of Science, Technology and Productive Innovation, Argentina

Membership list

Macroeconomic Response		Social Cohesion	
(10)(2e)	Research Council of Norway	(10)(2e)	National Science Foundation (USA)
(10)(2e)	UKRI Economic and Social Research Council (UK)	(10)(2e)	Agencia Nacional de Investigación y Desarrollo (Chile)
(10)(2e)	Israel Science Foundation	(10)(2e)	International Development Research Council (Canada)
(10)(2e)	Swiss National Science Foundation	(10)(2e)	Health Research Council of New Zealand
(10)(2e)	National Research Foundation of Korea	(10)(2e)	Hewlett Foundation
(10)(2e)	Netherlands Organization for Health Research and Development (ZonMw)		

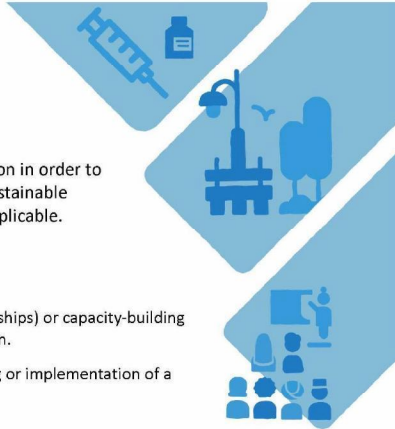
Steering Group meetings



Steering group focus

Over the next five weeks, each steering group will work through the following questions

1. What are the **3 to 5 most pressing questions** that require attention in order to accelerate socio-economic recovery and progress towards the Sustainable Development Goals (SDGs)? Include relevant sub-questions, if applicable.
For each question and sub-question,
 - Explain why addressing it is a top priority
 - Identify the resources (e.g. data, methodological innovations, partnerships) or capacity-building efforts are needed to ensure progress on this question or sub-question.
 - Comment on how the framing of the question, approach to answering or implementation of a solution differ across:
 - High-, middle-, or low-income countries or countries in conflict;
 - Sex and gender groups;
 - Racialized groups;
 - Other equity dimensions.
 - Identify any important environmental sustainability (e.g. climate impacts, pollution, natural resource consumption, biodiversity, ecosystem impacts) dimensions that should be considered.



Steering group focus

- How can **collaboration and coordination among funders** be strengthened to optimize impact in this research area?

The template below demonstrates the format of the worksheet steering groups will be using

LIN Research Roadmap for the COVID-19 Recovery							
REALITY/STRATEGIES/IMPACTS/OUTCOMES							
Using this template, please reply to the following questions:							
1) What are the 3 to 5 most pressing questions that require attention in order to accelerate and/or economic recovery and progress towards the Sustainable Development Goals (SDGs)? Include relevant sub-questions, if applicable.	2) For each question and sub-question identified, please explain why addressing it is a top priority in order to accelerate economic recovery and progress towards the SDGs?	3) What resources (e.g. data, methodological innovations, partnerships) or capacity building efforts are needed to insure progress on this question/sub-question?	4) For each question or sub-question please comment on how the framing of the question, approach to answering or implementation of a solution differs across: High-, middle-, or low-income countries or countries in conflict	Sex and gender issues	Racialized groups	Other equity dimensions	5) For each question or sub-question, please identify any impacts of environmental sustainability (e.g. climate change, pollution, natural resource consumption, biodiversity, ecosystem impacts) dimensions that should be considered.
Question 1 Sub-question 1.1 (if applicable) Sub-question 1.2 (if applicable) Sub-question 1.3 (if applicable)							
Question 2 Sub-question 2.1 (if applicable) Sub-question 2.2 (if applicable) Sub-question 2.3 (if applicable)							
Question 3 Sub-question 3.1 (if applicable) Sub-question 3.2 (if applicable) Sub-question 3.3 (if applicable)							
Question 4 Sub-question 4.1 (if applicable) Sub-question 4.2 (if applicable) Sub-question 4.3 (if applicable)							
Question 5 Sub-question 5.1 (if applicable) Sub-question 5.2 (if applicable) Sub-question 5.3 (if applicable)							
2) How can collaboration and coordination among funders be strengthened to optimize impact in this research area?							



Thank you!

(10)(2e)

Scientific Director, CIHR Institute of Population & Public Health

(10)(2e)@globalstrategylab.org | @ (10)(2e)