



Ministerie van Volksgezondheid, Welzijn en Sport
Rijksinstituut voor Volksgezondheid en Milieu
RIVM



RIVM: Internationally acclaimed

*Dialogue Mexico – the
Netherlands on COVID-19*

Prof. (10)(2e), MD, PhD

RIVM | Committed to health and sustainability



Key figures

- Established in 1909
- 1660 FTE, (2018)
43.3% of which men
- Turnover € 380 million (2019)
- Three knowledge domains
- Scientifically independent
(RIVM Act)
- Approx 900 projects every year
- Approx 150 reports and 700
scientific publications annually





Position

- RIVM is an agency of the Ministry of Health, Welfare and Sport (= owner)
- National commissioning parties include various government ministries, VWS, I&W, EZK, LNV, BZK, SZW, Defence and the NVWA
- International commissioning parties: EU and European agencies, UN organisations WHO, FAO, UNEP
- In connection with each other and society



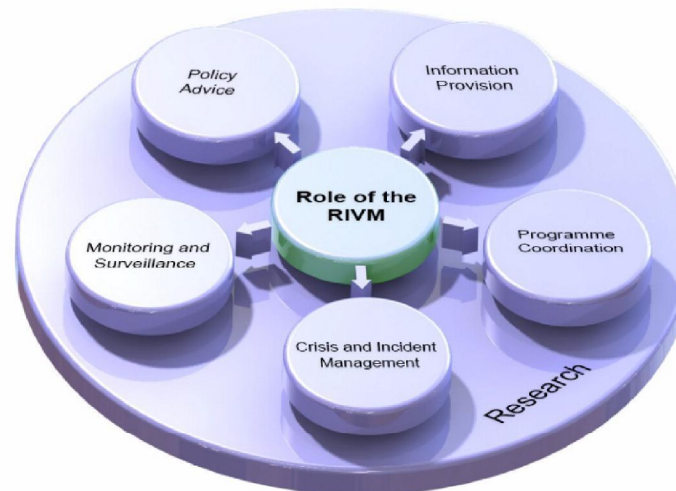


RIVM as a *trusted advisor*: primary process areas

Basis: research and innovation

Tasks:

- Policy advice
- Providing information
- Monitoring and surveillance
- Crisis and incident management
- Programme coordination





Roles of RIVM on behalf of and for commissioning parties

- Management and coordination of infectious disease control
- Solicited and unsolicited independent advice on health and the human and natural environment based on research and current scientific insights
- Management and coordination of national prevention programmes: National Immunisation Programme

Blood screening for pregnant women (PSIE)

Prenatal screening for Down's, Edwards

and Patau syndrome and SEO

Heel prick (NHS)

Hearing screening for newborn infants

Population screenings for cervical cancer, breast cancer, and colorectal cancer

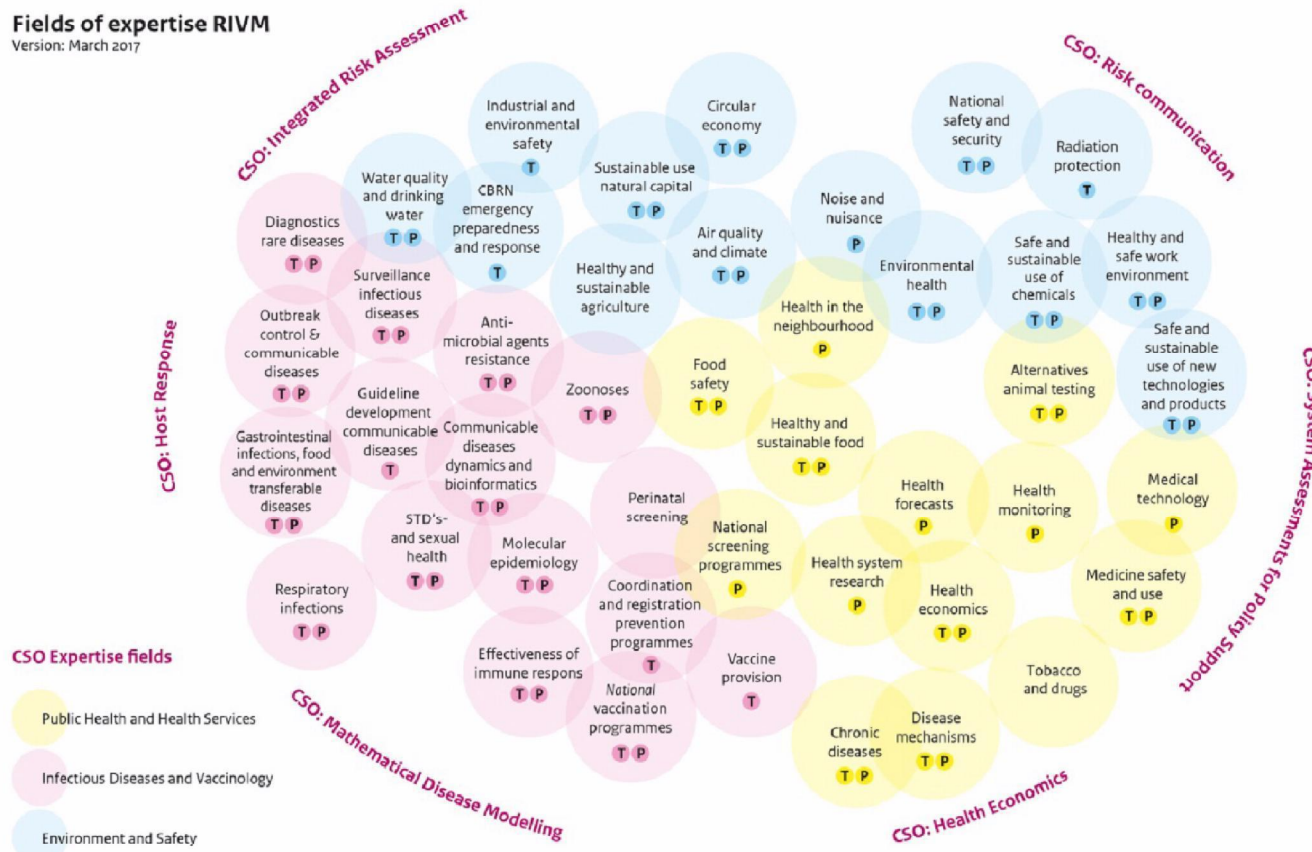
Flu shot



RIVM Fields of Expertise

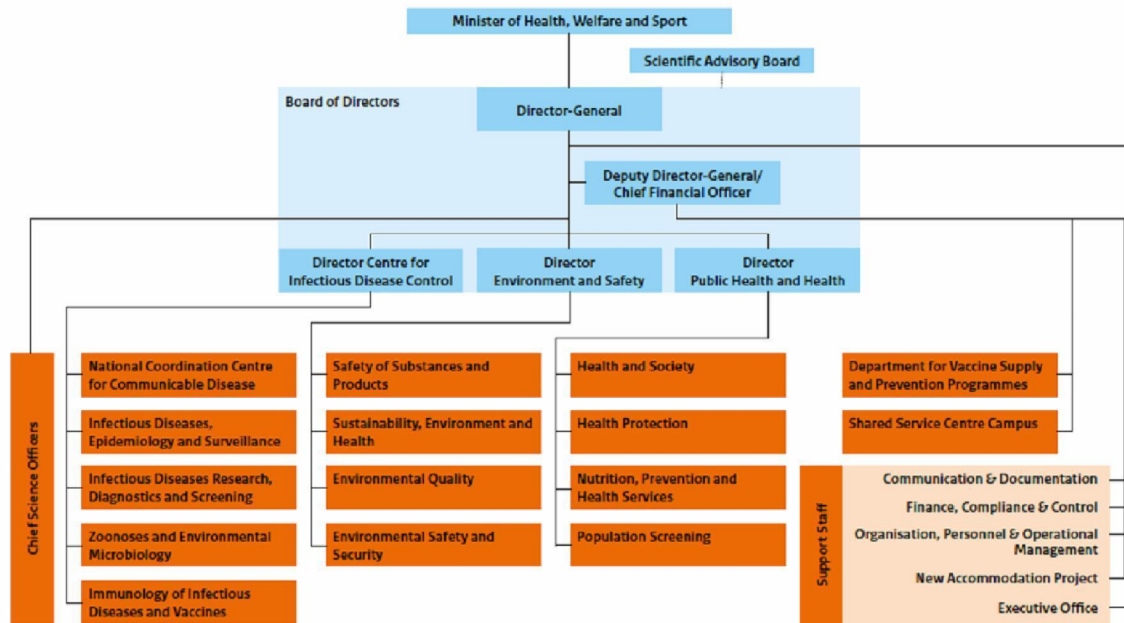


Fields of expertise RIVM
Version: March 2017





Structure of the organisation





Coordinates the control of infectious diseases and related communication. Facilitates an adequate and rapid response on regional and national level.

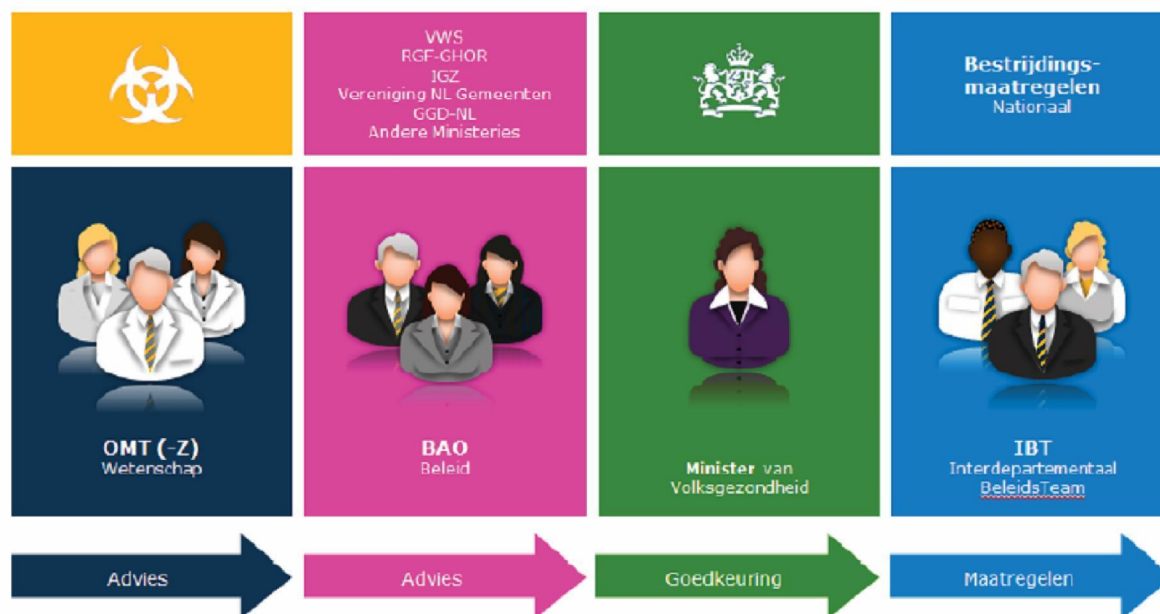
- prevention, control and crisis management
 - outbreak management team (OMT)
 - governmental coordination meeting (BAO)
- managing (national) networks - community health services (GGDs)
- guideline development and implementation
- communication



The National Coordination Centre for Communicable Disease Control



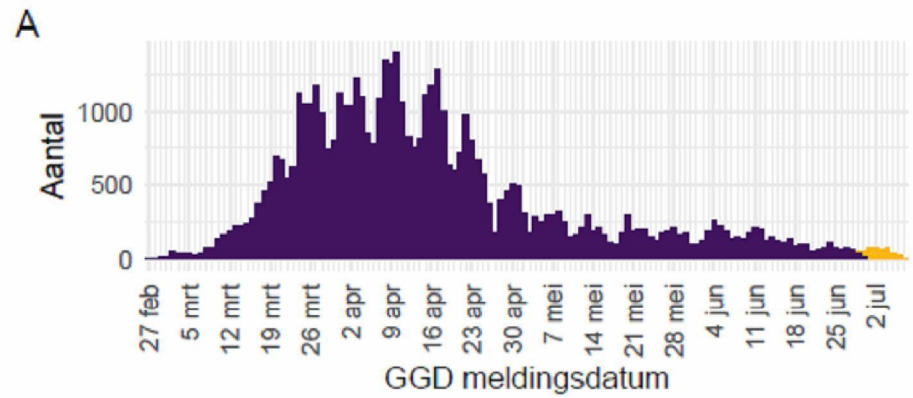
Outbreak response CIb



Illustratie: OMT-BAO-structuur

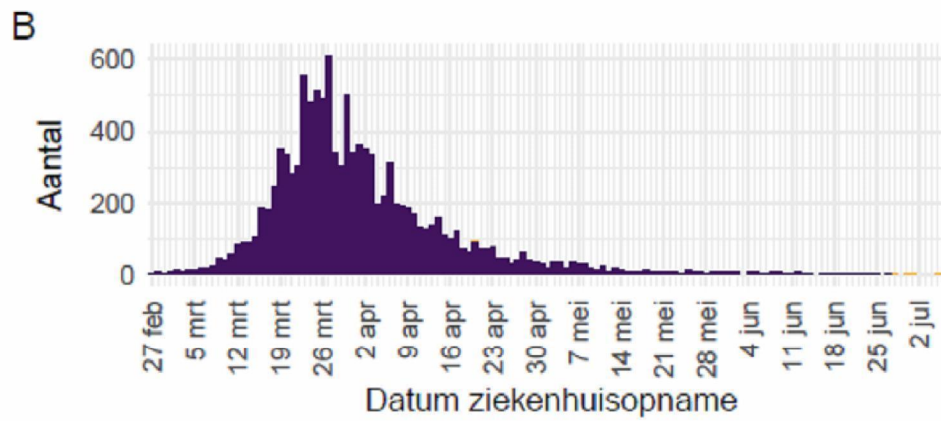


COVID-19 notifications in the Netherlands



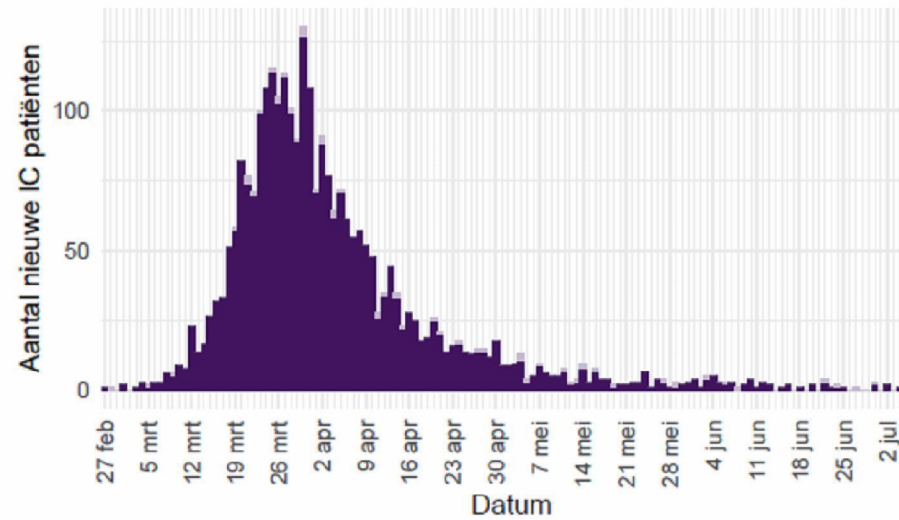


COVID-19 hospitalisations in the Netherlands



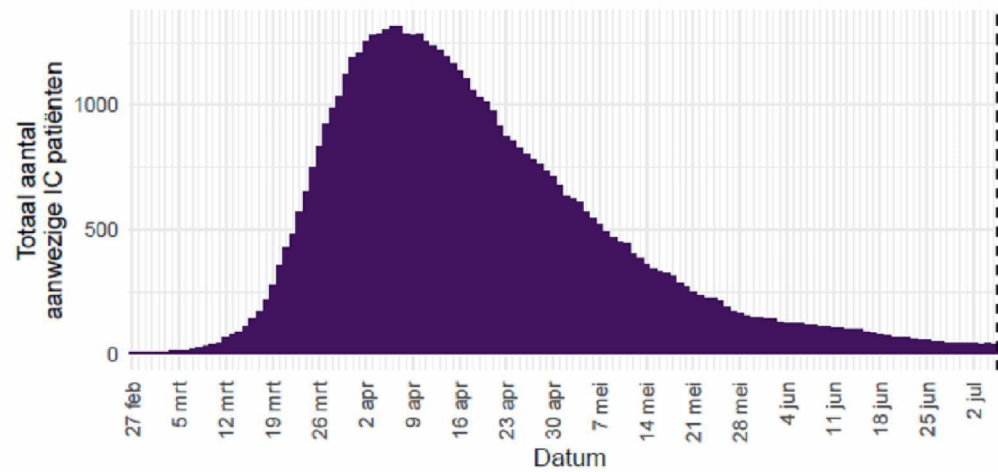


COVID-19 IC hospitalisations by date



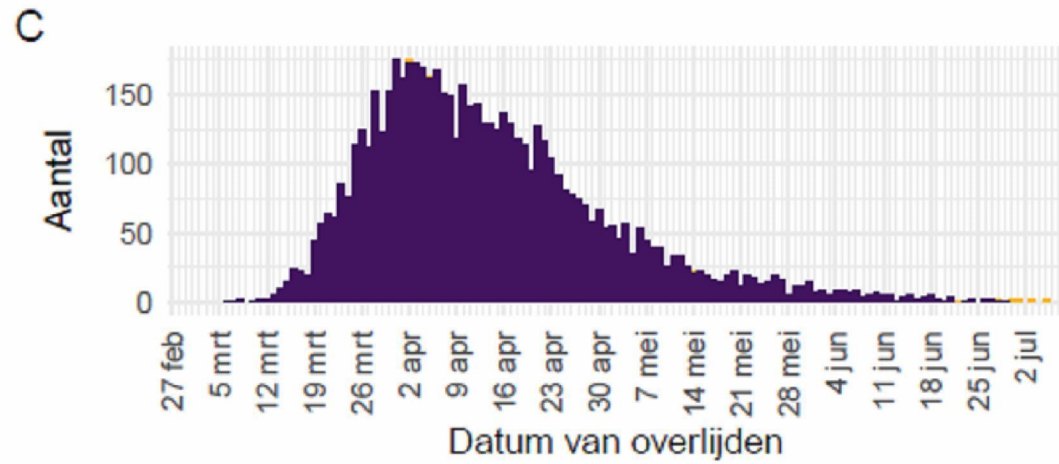


COVID-19 total number of IC patients by date



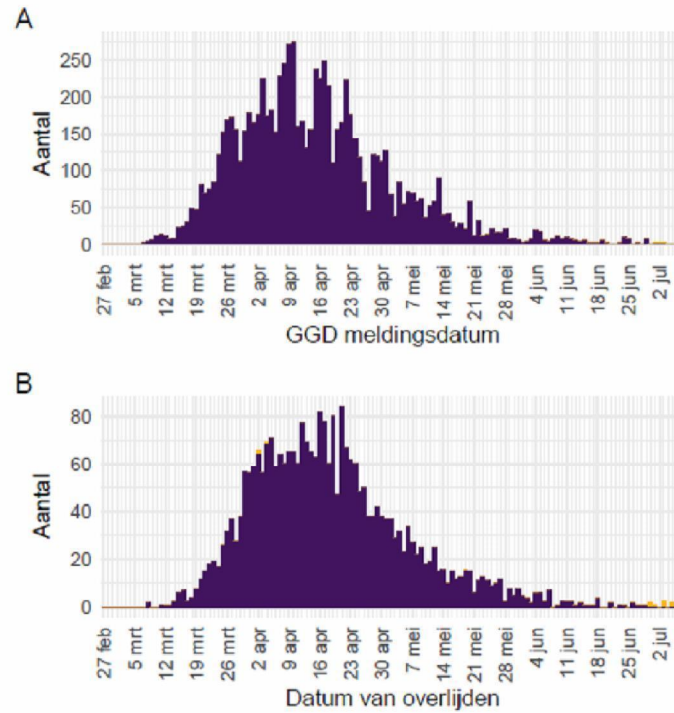


COVID-19 deaths in the Netherlands



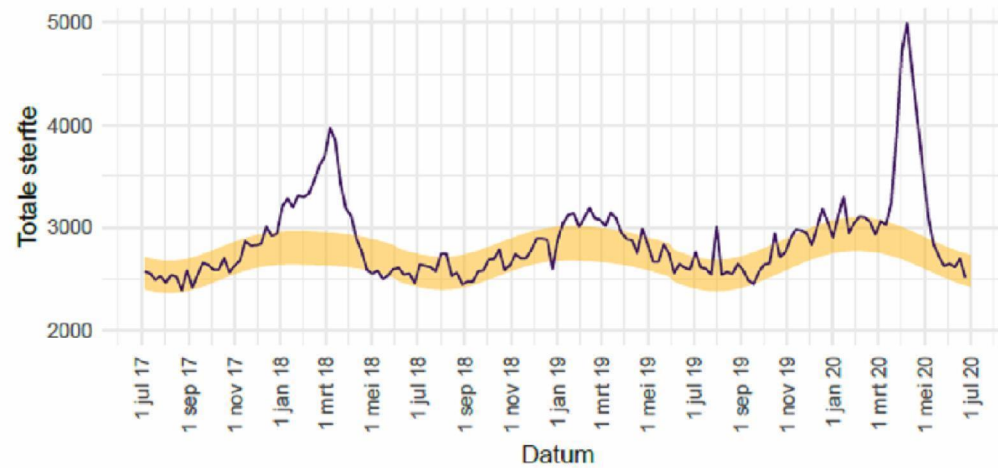


COVID-19 notifications and deaths in nursing homes





Mortality in the Netherlands



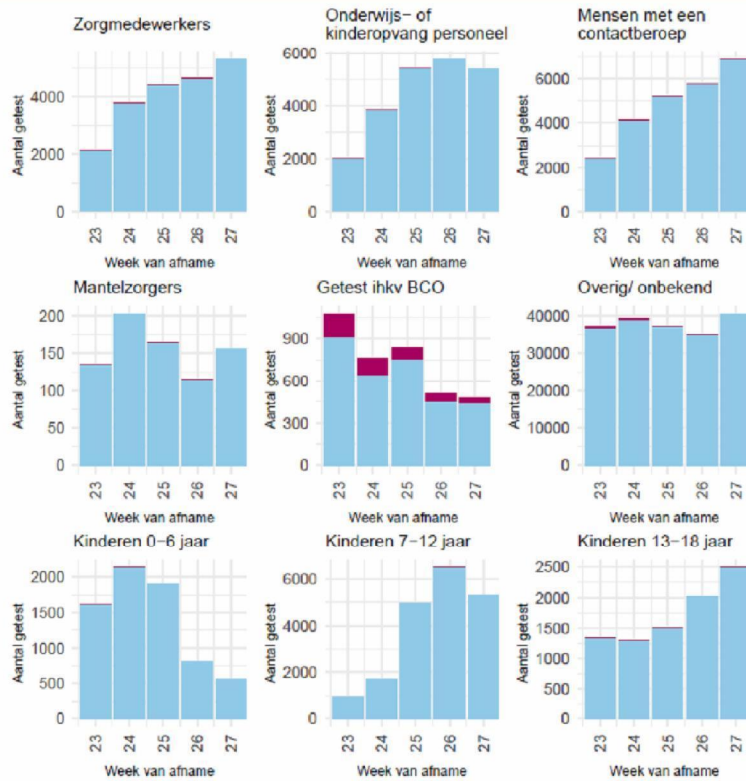


COVID-19 tests since 1 June

Tabel 7: Aantal testen uitgevoerd door de GGD'en, met bekende uitslag, waarvan positieve testen en waarvan gevonden middels bron- en contactonderzoek (BCO).

Weeknummer	Totaal aantal testen met uitslag	Aantal positief	Percentage positief	Positief getest ihkv BCO	Percentage positieven gevonden via BCO
23	48812	986	2.0	168	17
24	57013	841	1.5	128	15.2
25	61604	567	0.9	88	15.5
26	61222	426	0.7	65	15.3
27	67248	375	0.6	39	10.4
Totaal	295899	3195	1.1	488	15.3

COVID-19 positive tests per target audience since 1 June



Uitslag
■ Positief ■ Negatief