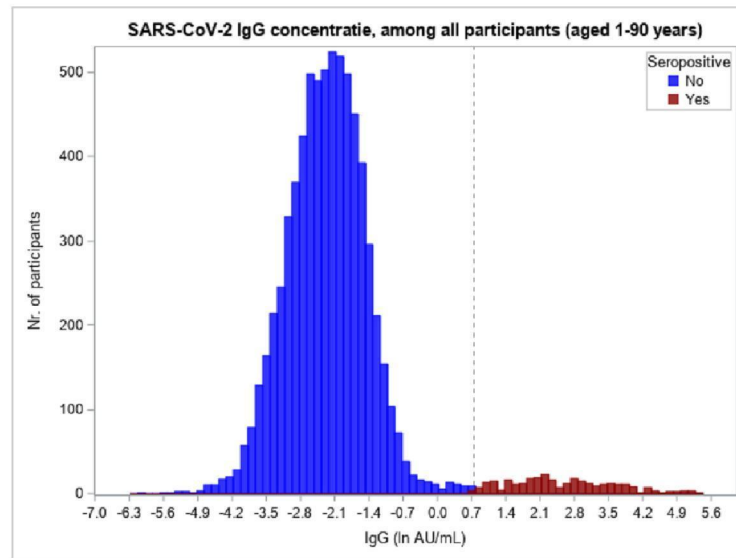
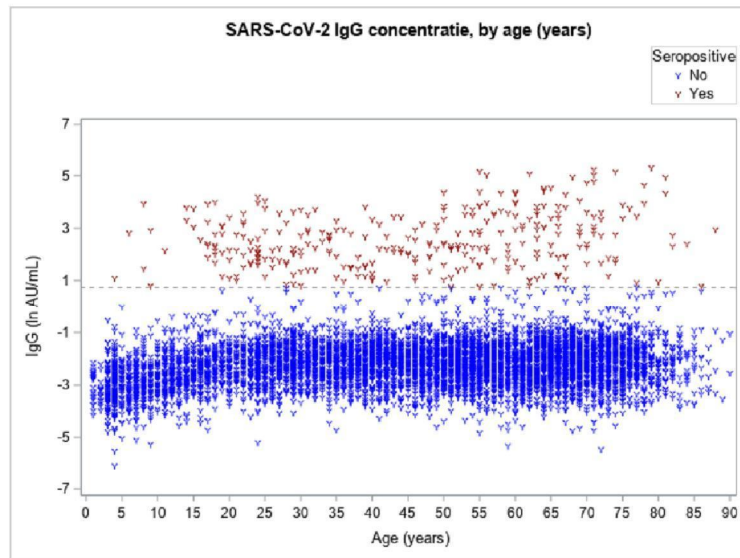


## SARS-CoV-2 IgG concentration (S1, In AU/mL)

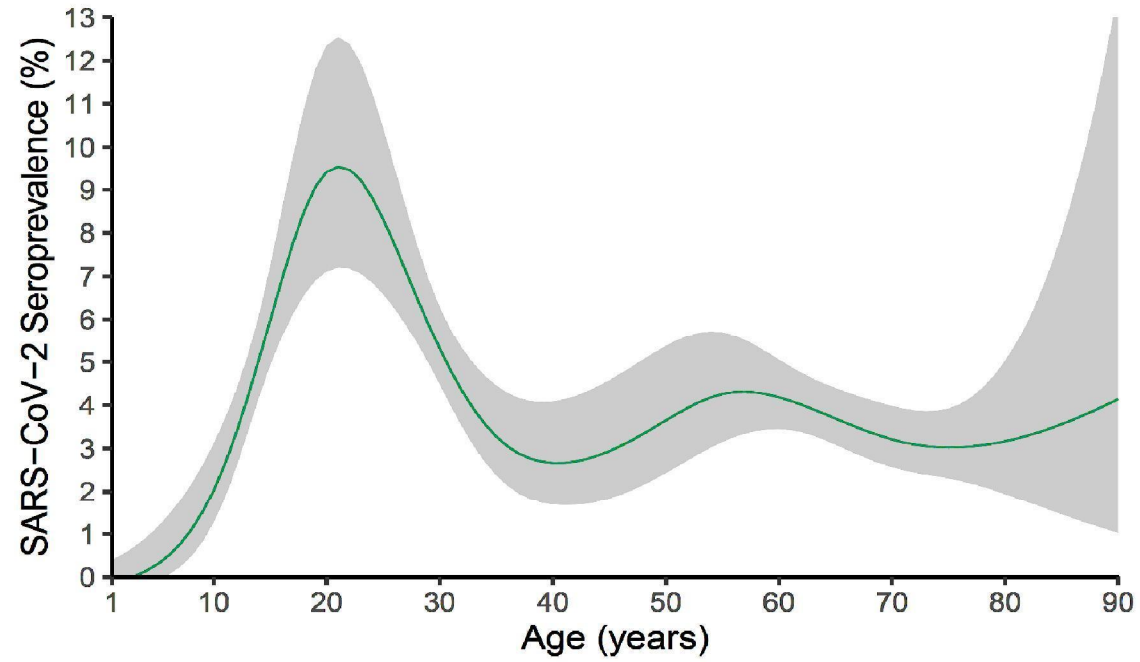


## Seroprevalence – NL

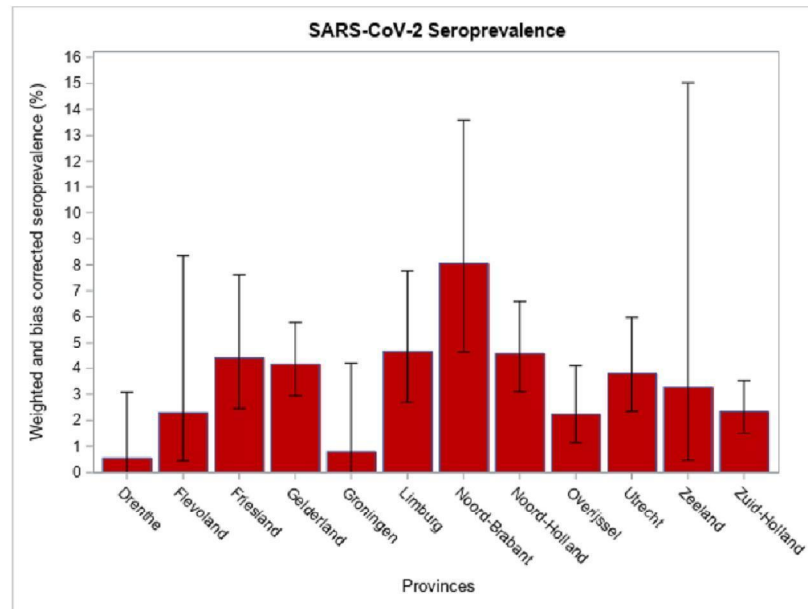
-> *Note: all data were corrected for the survey design (NS & PLUS samples were pooled), weighted, as well as corrected for test specifics (specificity=97.74 and sensitivity=89.03)*

- **Overall:** 4.1% [3.4-4.9]
- **By sex:**
  - Men: 4.4% [3.5-5.3]
  - Women: 3.8% [3.1-4.6]
- **By ethnicity:**
  - Dutch: 4.3% [3.5-5.4]
  - Non-Dutch Western: 2.4% [1.2-4.3]
  - Non-Western: 4.0% [2.1-7.1]

# Seroprevalence – NL, by age



## Seroprevalence – NL, by provinces

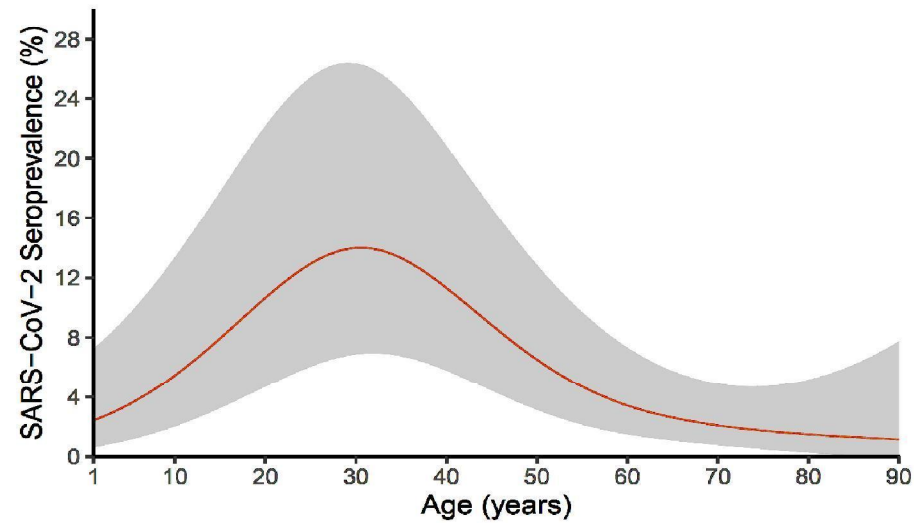


## Seroprevalence – LVC

**Overall: 6.6% [2.6-13.3]**

**By sex:**

- Men: 8.6% [2.7-19.1]
- Women: 4.7% [1.9-9.2]



# Seroprevalence – NL, by geo spread

